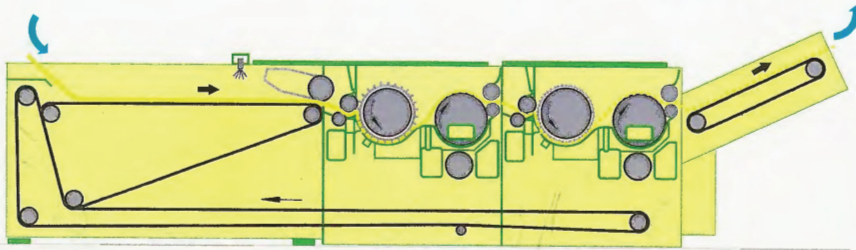
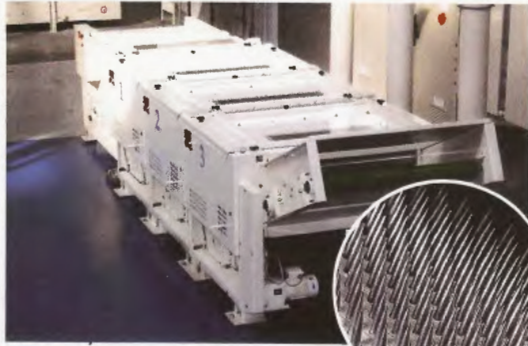


Cadette



CADETTE 2

Tearing machine Cadette

Designed for in house recycling of spinning, weaving, knitting and drylaid nonwoven wastes. Available from 2 to 6 opening sections.
Accessories: sharpener - fiber lubrication.

Petite effilocheuse compacte modulaire et évolutive destinée à traiter tous types de déchets de l'industrie textile : déchets de filature, tricotage, tissage, confection et nontissé voie sèche.
Disponible de 2 à 6 modules d'ouvroison
Accessoires : affûteuse intégrée, dispositif d'ensimage.

Deshilachadora muy compacta modular destinada a procesar todo tipo de desperdicios: de las hilanderías, tejidos de punto, tejidos planos, confección y no-tejidos. Disponible desde 2 hasta 6 módulos.
Accesorios: dispositivo de afilado integrado, dispositivo de ensimaje.

Entwickelt für haus-eigenes Recycling von Spinnerei-, Weberei-, Strick- und Vliesstoffabfällen. Verfügbar mit 2 bis 6 Einheiten.
Zubehör: Schleifereinrichtung, Schmelzeinrichtung.

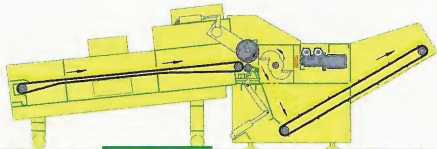
Working width: 500 - 1000 mm
Production capacity: up to 250 kg/h

LAROCHE

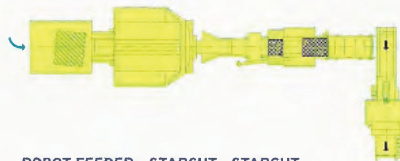
Recycling



Cutting system



STARCUT



ROBOT FEEDER - STARCUT - STARCUT

From a simple system with 1 or 2 rotary cutters to a complete cutting plant with robot feeder followed by two cutters at 90°.

De la simple coupeuse rotative alimentée manuellement jusqu'aux unités de chargement automatisées alimentant 2 coupeuses à 90°.

Desde una simple cortadora rotativa alimentada manualmente hasta unidades de cargamento automatizadas alimentando dos cortadoras a 90°.

Einfaches System mit 1 oder 2 Rotations-Schneidemaschinen bis zur kompletten Schneidanlage mit Ballen-Robot und 2 Schneidemaschinen im 90° Winkel.

STARCUT: Rotary cutter with cutting head with 2 or 4 flying knives and feeding conveyor rolling out of the machine for easy access. Built-in sharpener. Option: metal detector, dedusting of the cutting head.

Coupeuse rotative STARCUT équipée de 2 ou 4 lames avec tapis d'alimentation escamotable et système de rectification des lames intégré à la machine. Option : détecteur métallique, dépolvisage de la tête de coupe.

STARCUT: Cortadora Rotativa con cabeza de corte de 2 o 4 cuchillas con telera de alimentación móvil y sistema de rectificación de las cuchillas integrado a la máquina. En Opción: detector electrónico de metales, sistema de despolvamiento de la cabeza de corte.

STARCUT: Rotationschneidemaschine mit 2 oder 4 Rotormessern, bewegliches Zuführband für einfachen Zugang. Eingebaute Schleifmaschine. Option: Metalldetektor, Staubabsaugung.

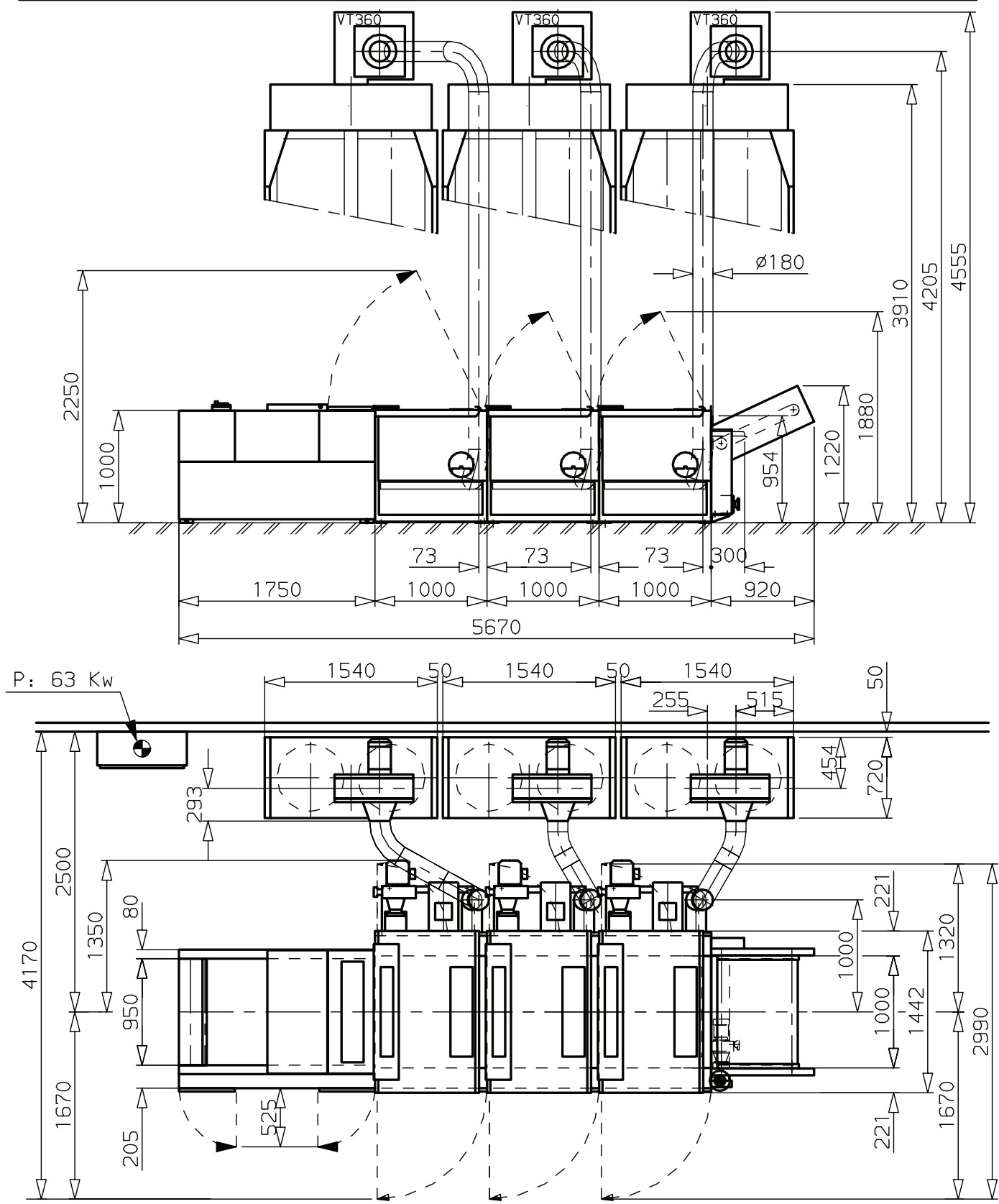
Working width: 500 mm
Production capacity: up to 3000 kg/h


LAROUCHE



LAROCHE

equipements pour industries
textiles et paratextiles
69470 COURS - FRANCE



Air comprime - Compressed air 
 Pression 2 a 4 bars - 0,01 m³ par freinage
 Pressure 2 to 4 bars - 0,01 m³ for each braking

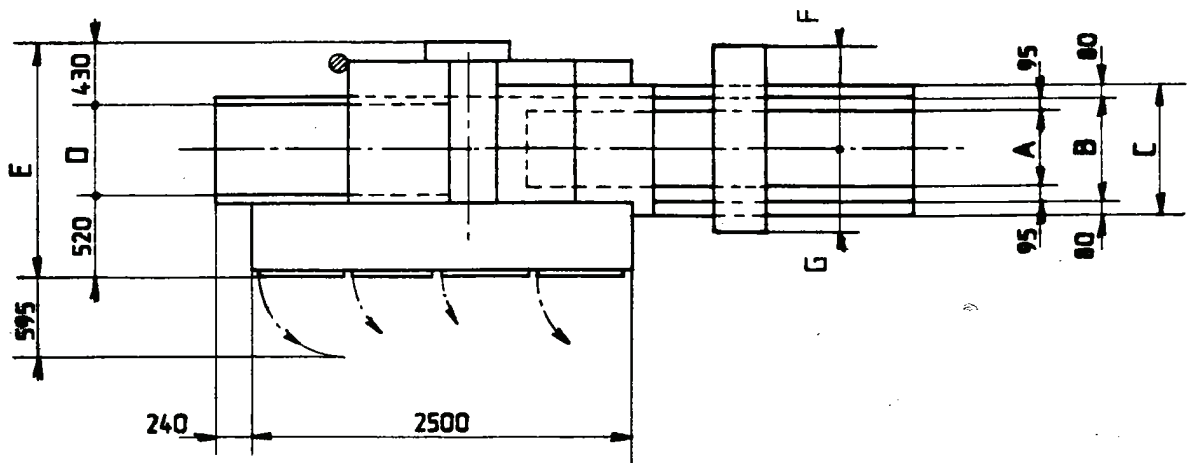
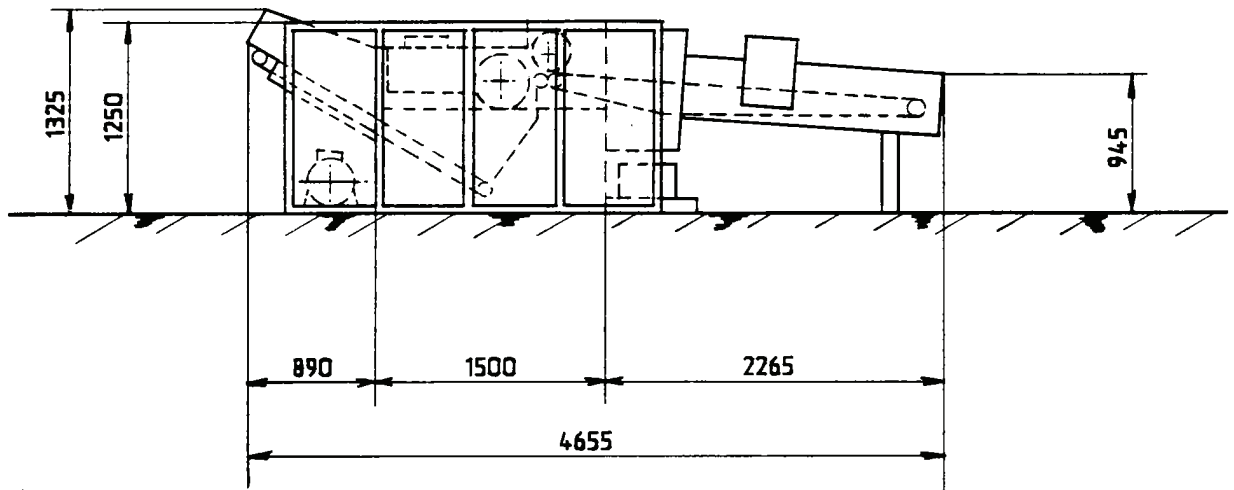
CADETTE 1000	3 tamb. avec tablier de recyclage	Encombrement
CADETTE 1000	3 Tamb. con telera de reciclado	Lugar ocupado
CADETTE 1000	3 cyl. with return conveyor belt	Floor space
Date :	Echelle : 1/50	Dessine par : M.D.

022-0333

LAROCHE

MACHINES TEXTILES

Type	A	B	C	D	E	F	G	Poids Weight
230	280	470	630	400	1350	585	450	2300 kg
231	480	670	830	600	1550	685	550	2700 kg



- Air comprimé, pression 6kg/cm², débit 1m³/h, tuyau souple ϕ 6/8
- Compressed air, pressure 6kg/cm², air flow 1m³/h, flexible pipe ϕ 6/8

Encombrement - Floor space -

COUPEUSE ROTATIVE - ROTARY CUTTER

Date:

Echelle: 1/50

Dessiné par: J. S

022 - 0003



✓ **Extra Smooth Interior**



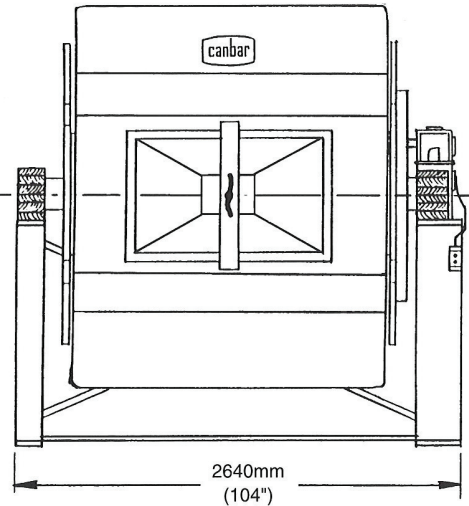
**Polyethylene
Dry Milling Drum**



FEATURES:

Smooth one piece moulded polyethylene drum.

- No contamination from one batch to another
- Assures no damage to leather grain
- Improves softness and quality of leather



SPECIFICATIONS:

Size:

Inside diameter: 2235mm (88")

Inside width: 1830mm (72")

Capacity:

200 kgs. (440 lbs.)

Shelves:

Six integrally moulded shelves 380mm (15") high

Door opening:

635mm x 1065mm (25" x 42")

Drive:

5,6 kw (7½ H.P). Constant speed mechanical drive

Speed:

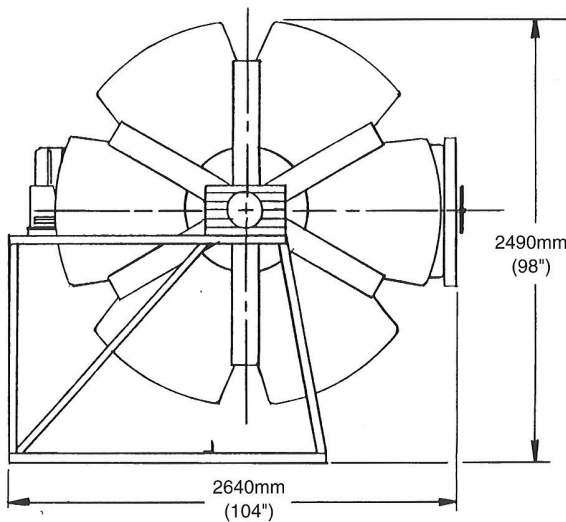
16 R.P.M.

Support Frame:

Steel fabricated support stand, epoxy coated.

Optional Equipment:

- Dust collecting system
- Humidity control
- Temperature control
- Timing control



CANBAR INC.

P.O. Box 267, 250 Woolwich Street South

Breslau, Ontario, Canada N0B 1M0

Telephone: (519) 648-2278 Fax: (519) 648-2001