



Steps in the process of traceability

[illegible]

GS1 is a global standards organisation

GS1 is a neutral, not-for-profit organisation that develops and maintains the most widely used global standards for efficient business communication.

- Local Member Organisations in 116 countries
- 6 billion GS1 barcodes scanned daily
- 100 million products carry GS1 barcodes
- More than 2 million companies use GS1 standards



The best known of these standards is the barcode

a symbol printed on products that can be scanned electronically

- Almost 50 years are known as “the barcode”
- Actually, we do much more for the supply chain **worldwide** and for the various sectors of industry.
 - Barcodes & RFID tags
 - EDI electronic data interchange
 - Trusted Data (GDSN, GS1 Source, SmartSearch)
 - EPCIS
 - Professional Services
 - Consultancy, Verification, Data Quality Checks, Photos



Beep! On 26 June 1974, a packet of chewing gum became the first barcoded product to be scanned in store.

GS1 standards at-a-glance

GS1 standards create a common language to identify, capture and share product data, ensuring important information is accessible, accurate and easy to understand.



Identify

Uniquely identify products, places and assets



Capture

Capture identity and more in a barcode or RFID tag



Share

Share data with trading partners, consumers and patients

Selling a product starts with a GS1 barcode number



GS1 standards have been used to improve efficiency, safety and visibility of supply chains from source to consumer.

Nowadays the GS1 barcode launched the digital revolution—enabling a product to be identified and connected to accurate information from the start.



Better consumer experiences



The GS1 standards enable businesses to create a digital version of a product that is a true representation of the physical one.



Improving the availability of reliable product information



Making it easier to find and buy a product



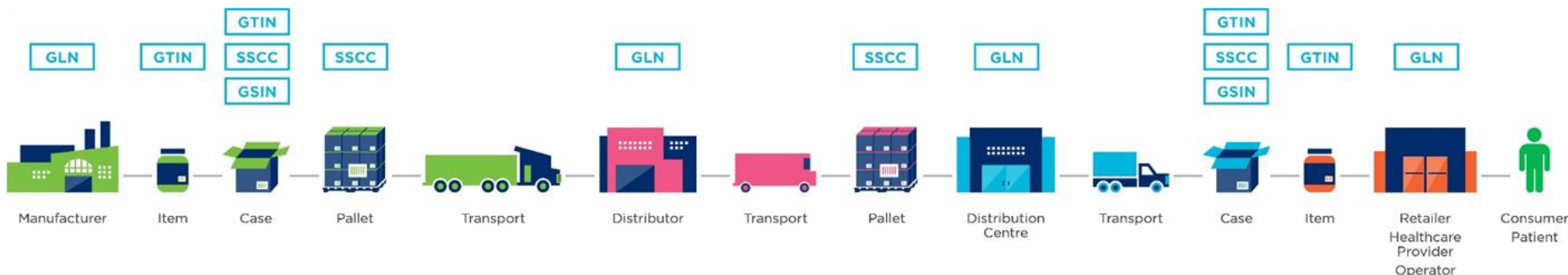
Delivering better shopping experiences and improved patient safety

**GS1 believes in the power
of standards to transform
the way we work and live.**



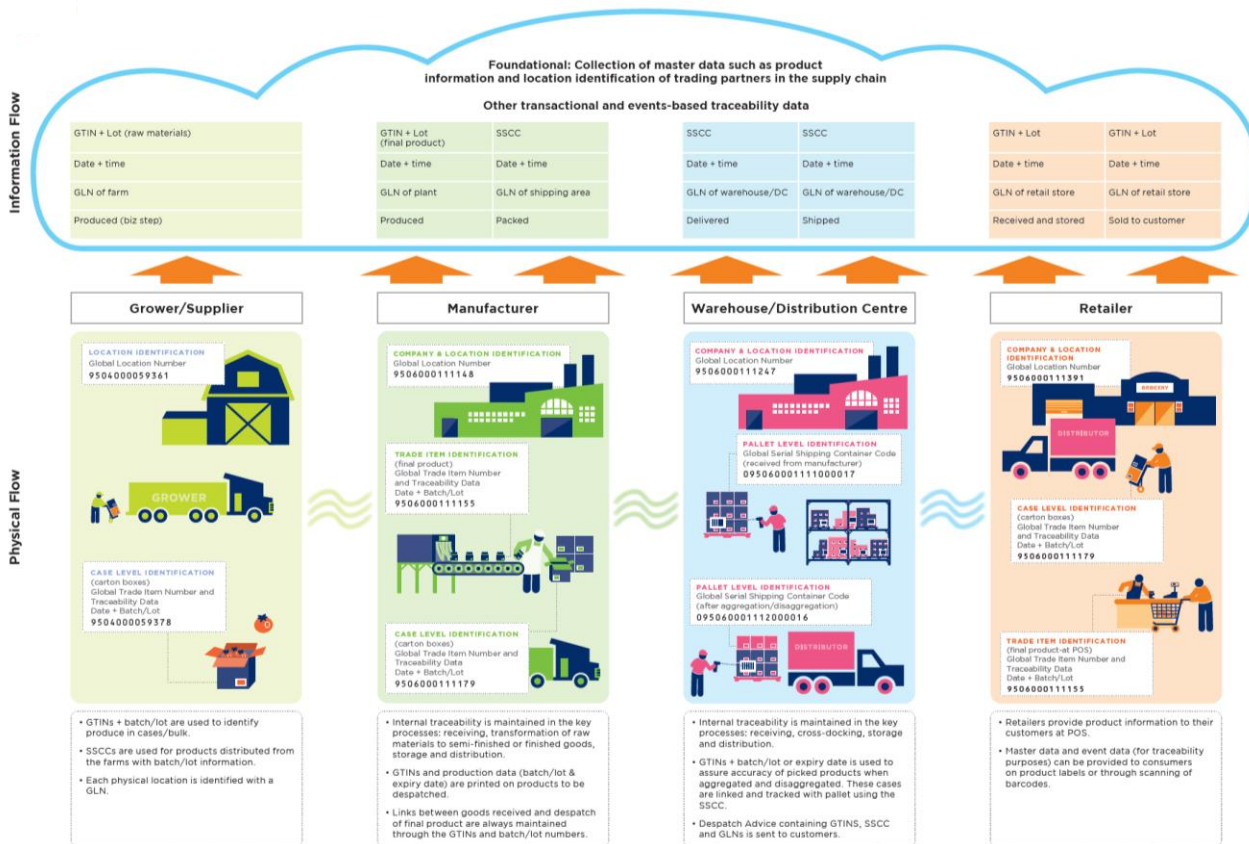
GS1 Discovery App

An ordinary jar of jam on an extraordinary journey



https://discover.gs1.org/cpg/?locale=GS1GO-British_English--en

GS1 standards enabling traceability in the food supply chain



Our management board



Global partner organisations



Thank you!

