

# SC° ZONE'

CAI 30°02'32"N 31°13'57"E

SUZ 29°42'49"N 32°18'17"E

PSD 31°15'33"N 32°18'10"E

المنطقة الاقتصادية  
لقة السويس  
SUEZ CANAL ECONOMIC ZONE

01

—  
STRATEGIC FACTS

# About SCZONE

# SCZONE Facts

**455** KM<sup>2</sup>  
TOTAL AREA

**100K**  
DIRECT & INDIRECT JOBS

**6**  
SEA MAIN PORTS

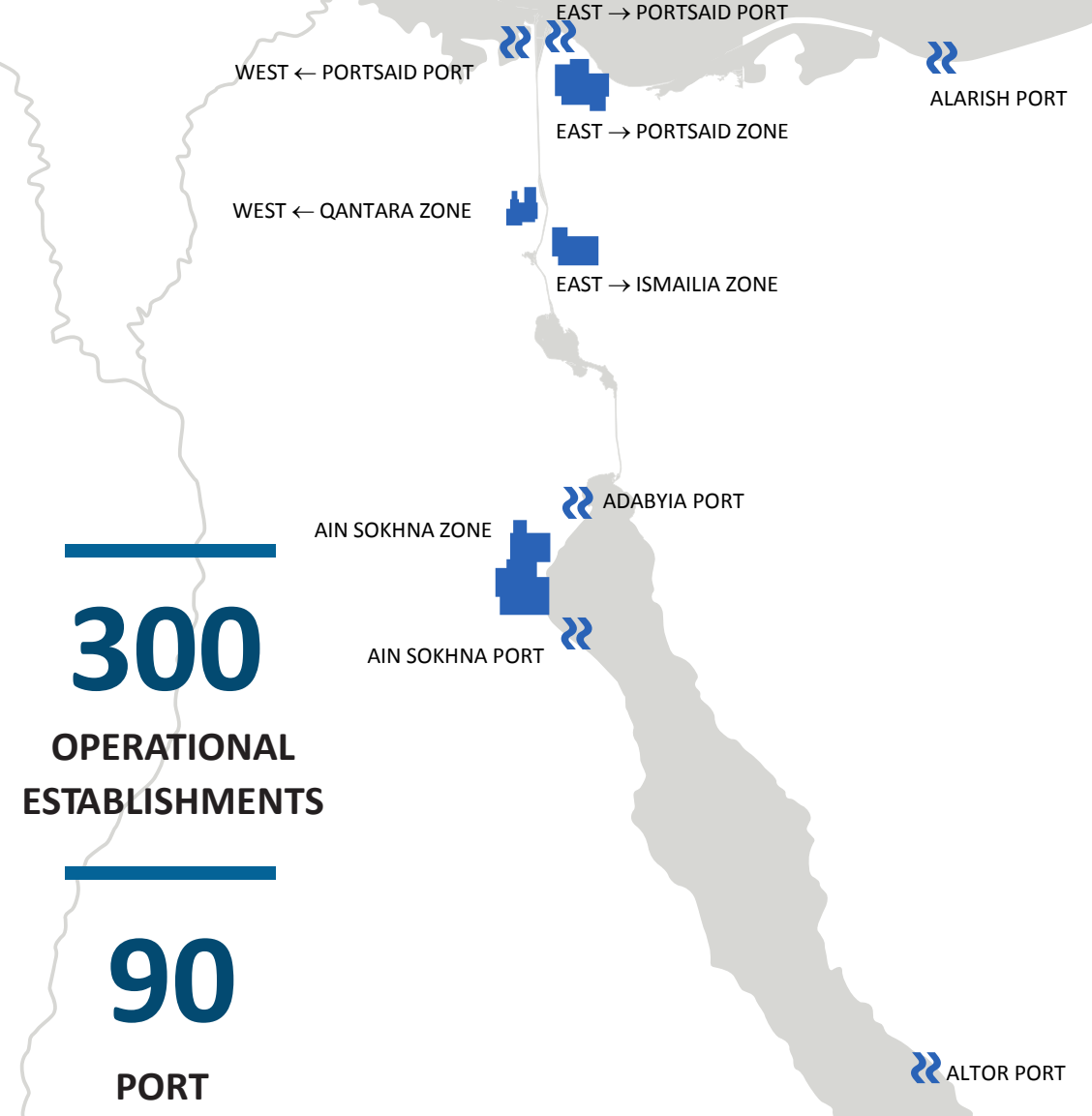
**3**  
MAIN PORTS OPERATORS

**4**  
INDUSTRIAL ZONES

**14**  
INDUSTRIAL DEVELOPERS

**300**  
OPERATIONAL ESTABLISHMENTS

**90**  
PORT ESTABLISHMENTS



## Strategic Location

A promising investment destination comprising 4 industrial zones & 6 sea ports, around the main global maritime trade route (Suez Canal), passing through it:

12%

INTERNATIONAL  
TRADE

10%

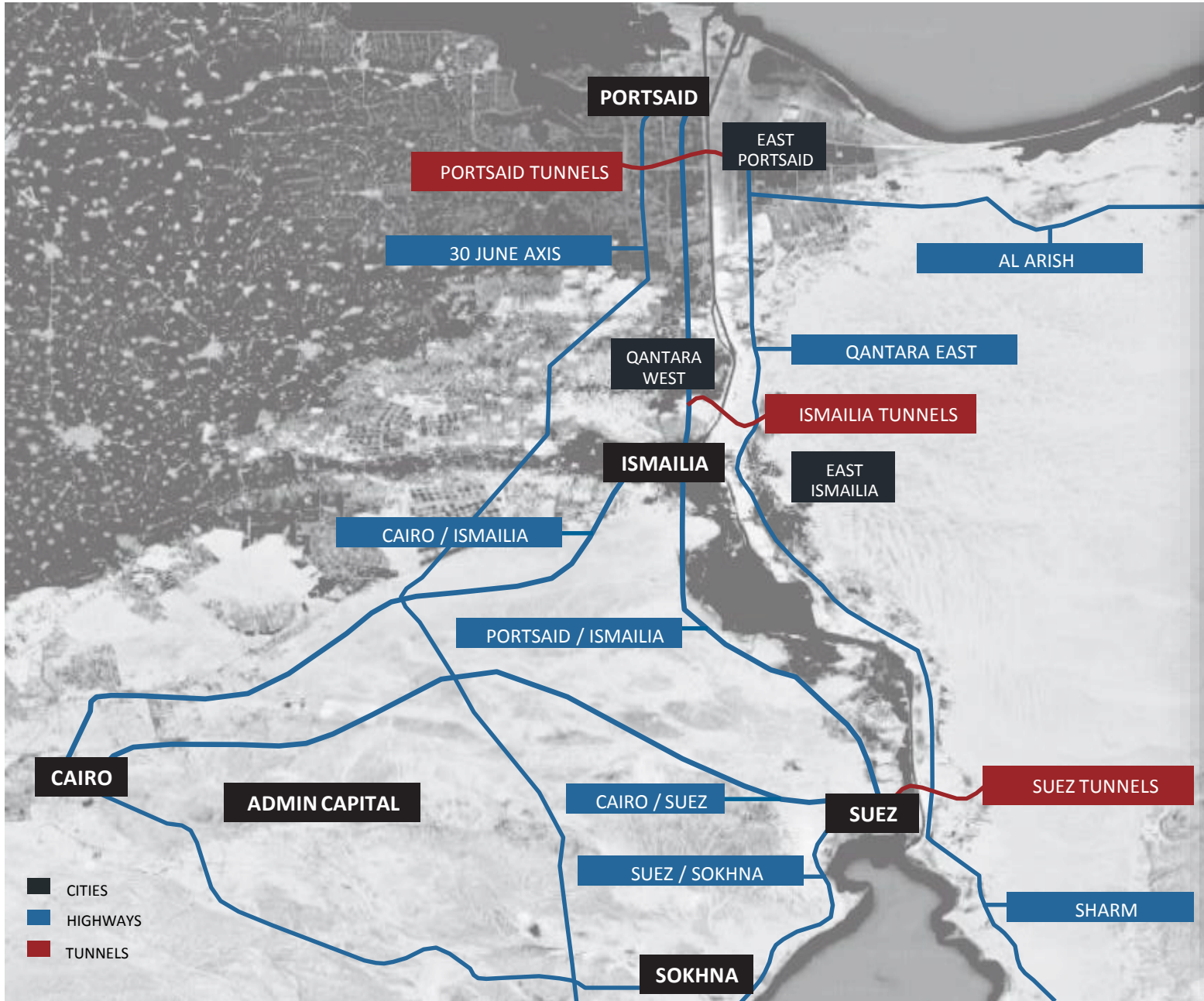
SEABORNE  
TRADE

20K

SHIPS PER YEAR

● Industrial Zones ● Ports

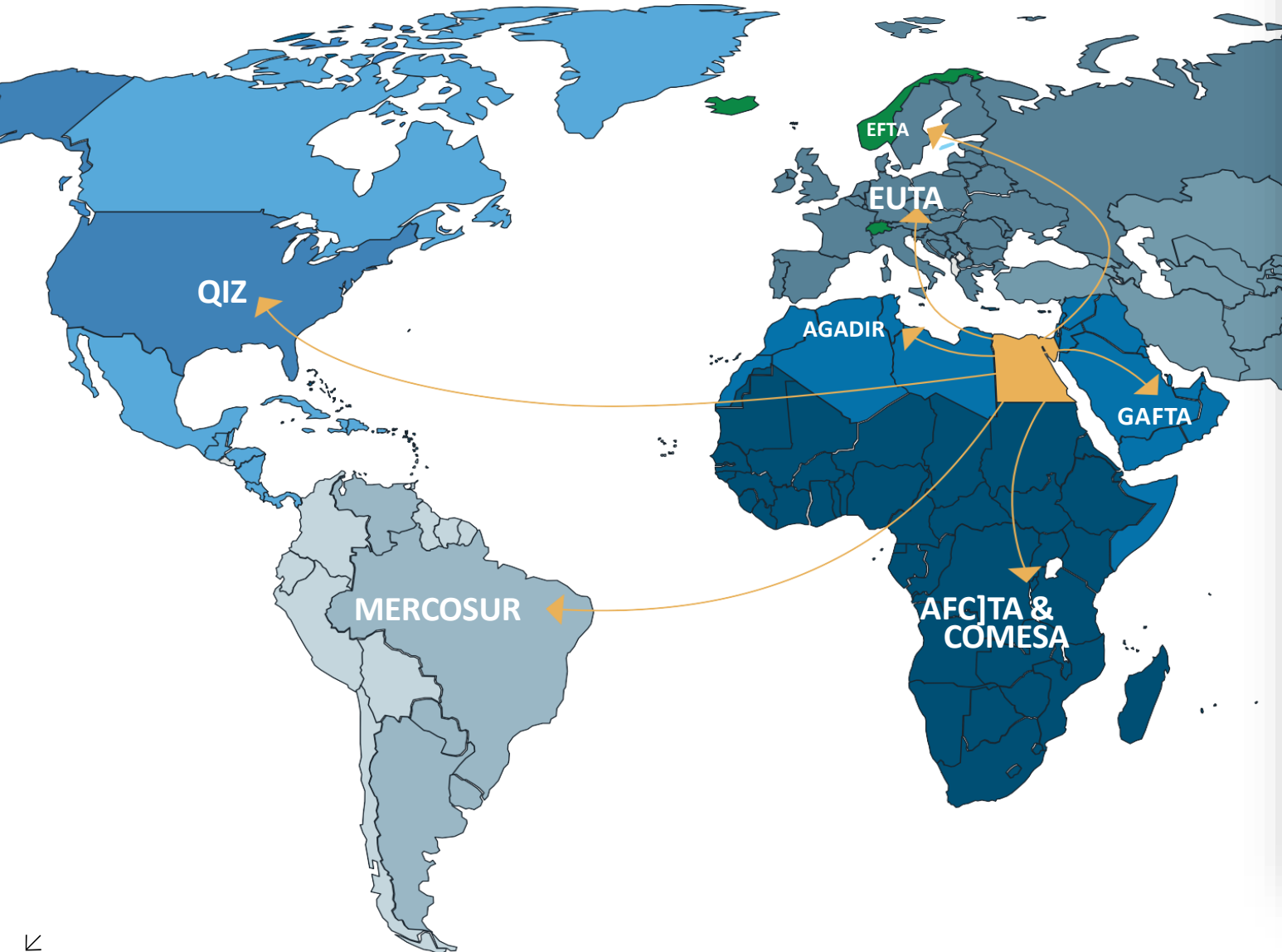




## Regional Context

SCZONE is well connected to the new modern roads network of Egypt, and enjoys direct connection to the new Suez Canal tunnels facilitating transportation between its two banks.

## Markets Accessibility



# 100%

## CUSTOMS EXEMPTION

With Free Trade Agreements

# 100Mn

## CONSUMERS

Accessing a promising domestic market in Egypt

# 2Bn

## CONSUMERS ACCESSIBILITY

In the international market benefiting from multiple free trade agreements

02 —  
FOUR ZONES

# Industrial Zones



# SOKHNA Industrial Zone



One of the world's largest industrial complexes directly connected and integrated to Sokhna Port



<p><b>186</b> km<sup>2</sup></p> <p>—</p> <p>Total Area</p>	<p><b>13</b></p> <p>—</p> <p>Industrial Developer</p>
<p><b>+270</b></p> <p>—</p> <p>Establishments</p>	<p><b>80</b> km<sup>2</sup></p> <p>—</p> <p>Developers Area</p>



## EAST PORTSAID Industrial Zone

A promising investment area at the northern entrance of the Suez Canal comprising of logistics and industrial zones, integrated to east Port Said Port



**64** km<sup>2</sup>

Total Area

**1**

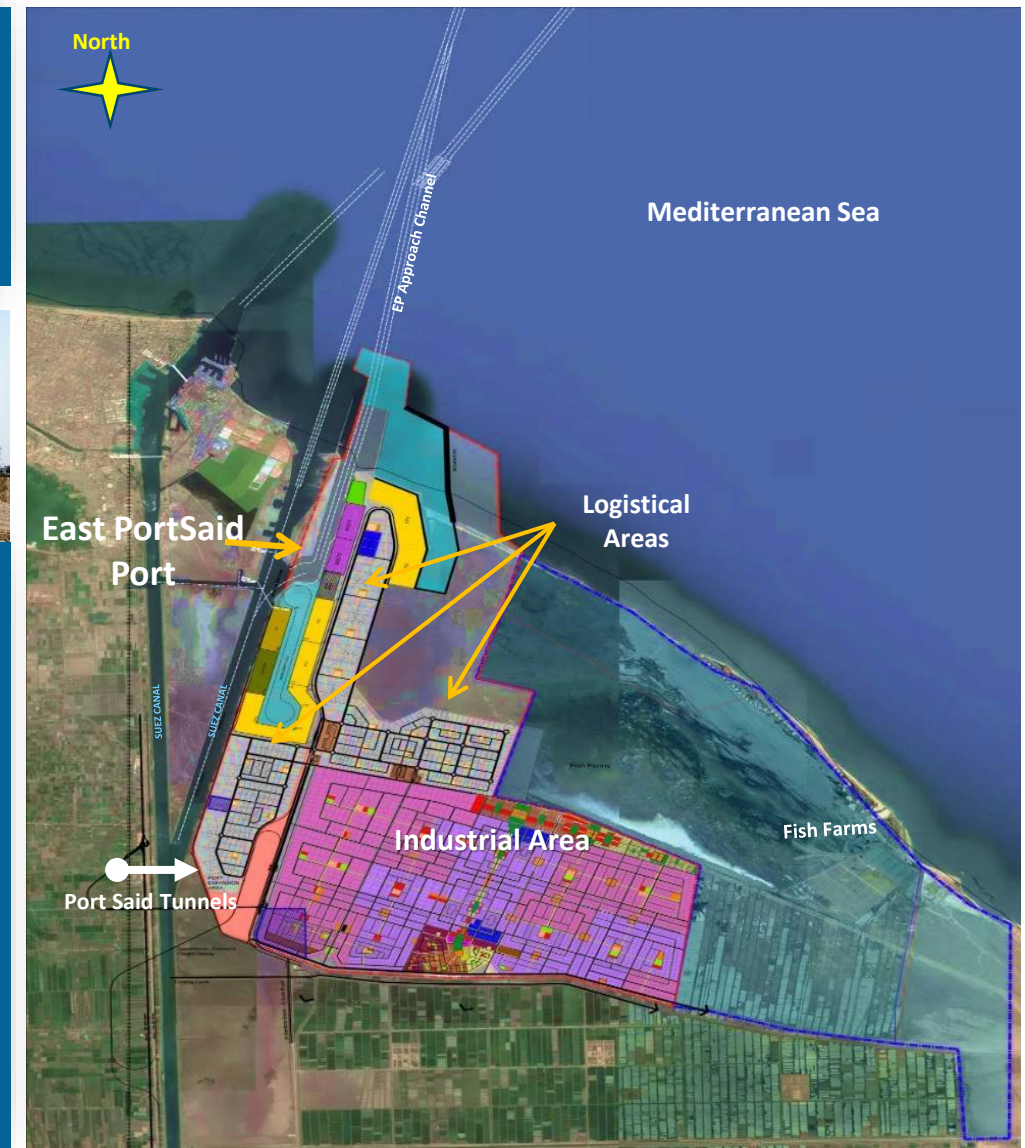
Industrial Developer

**+10**

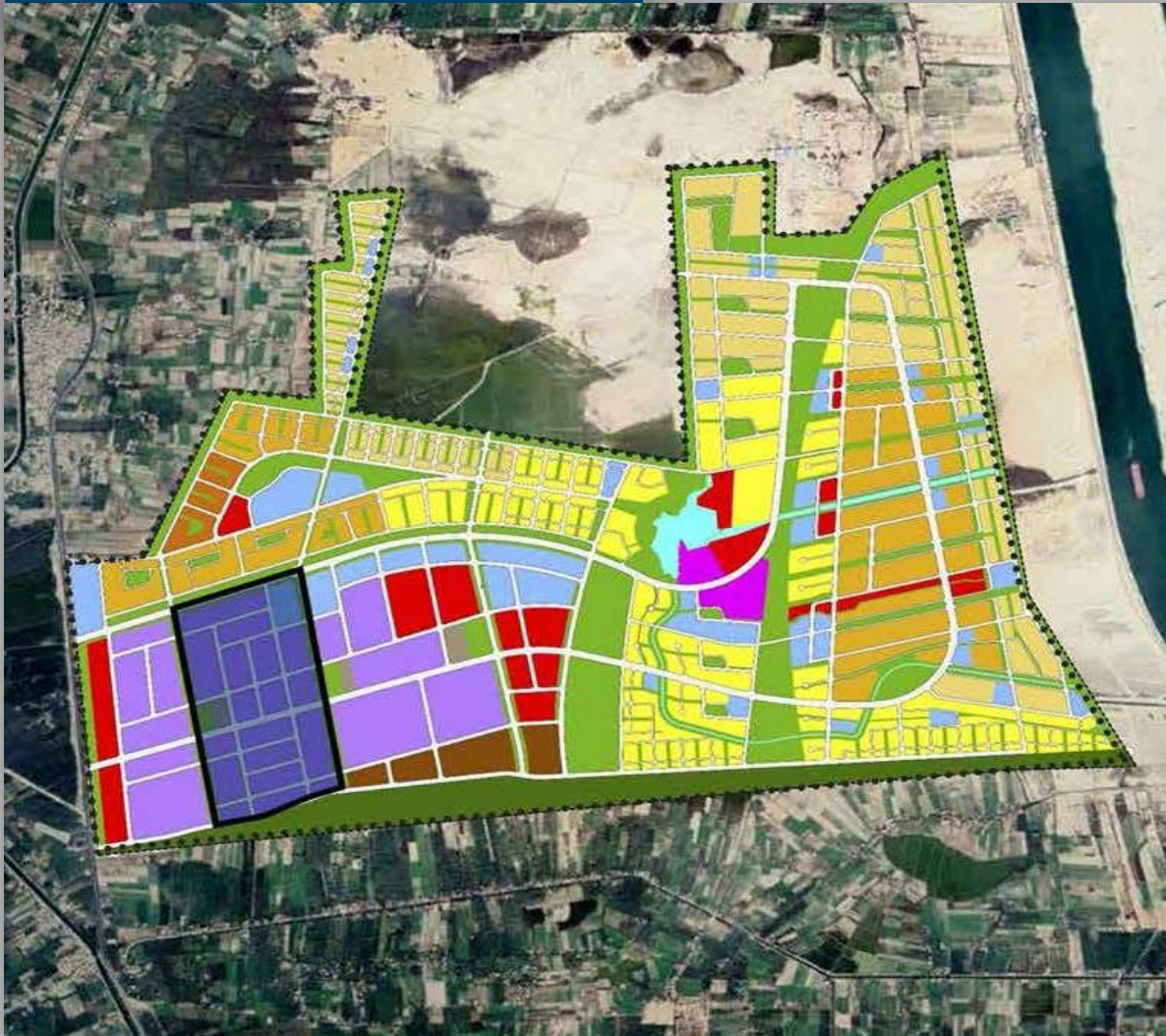
Establishments

**16** km<sup>2</sup>

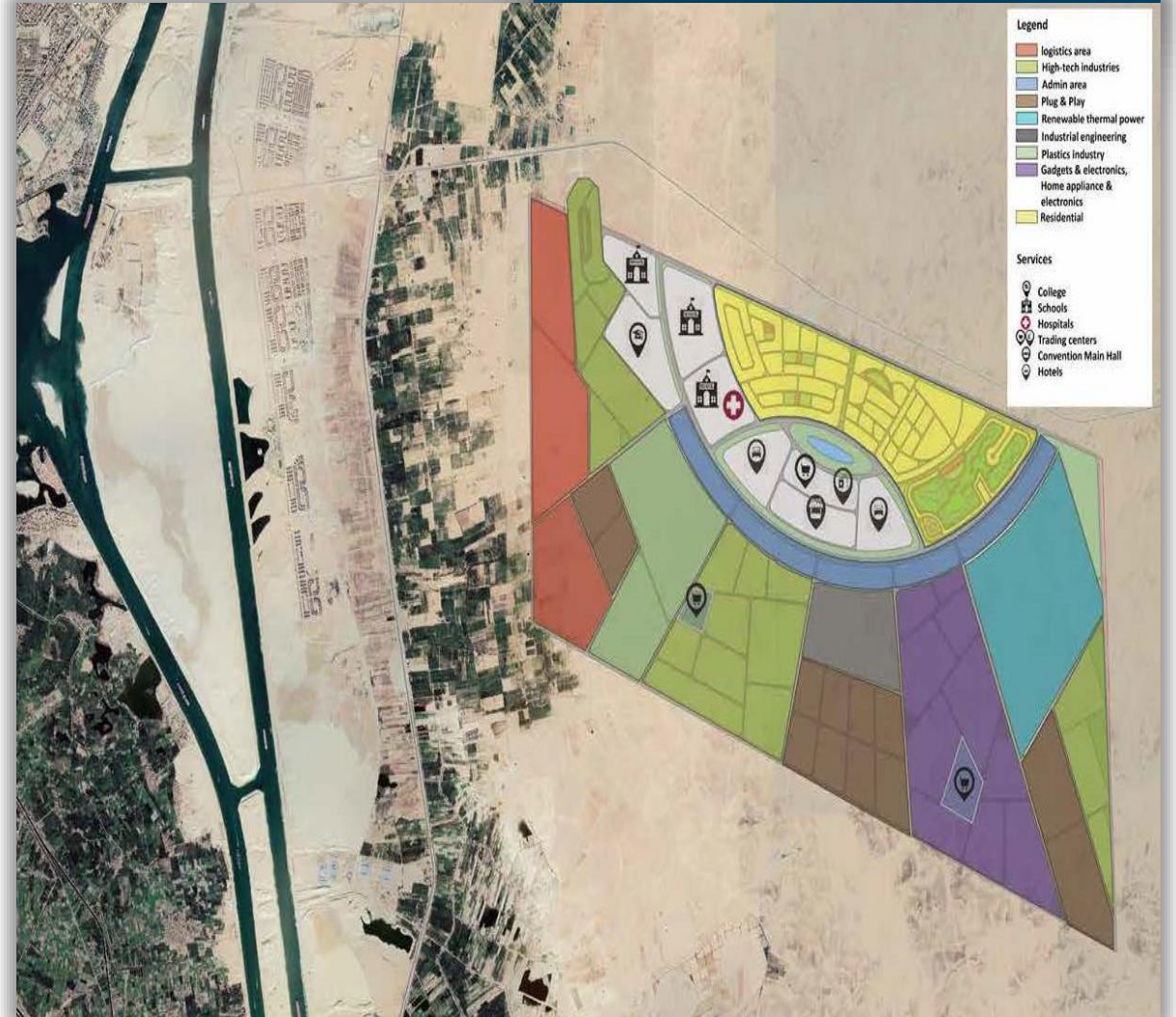
Developers Area



# Qantara West



# East Ismailia

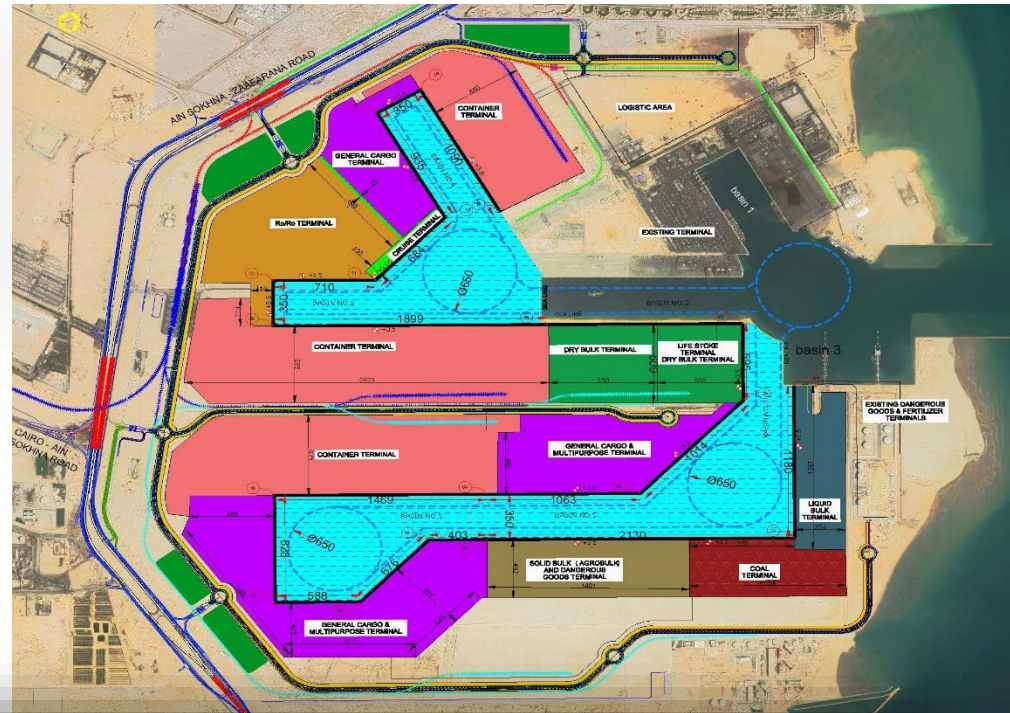


# 03 — SIX SEA PORTS Ports

INTER EGYPT

# SOKHNA Port

Egypt's main gateway on the Red Sea, at the southern entrance to the Suez Canal, on the west coast of the Gulf of Suez



25 km<sup>2</sup>

Total Area

18 km

New Quay

18 m

Port Depth

5.3 km<sup>2</sup>

New Logistics Area

10 km<sup>2</sup>

Railways



to be connected to  
(Sokhna/New  
Alamain Electric Train)  
under construction

# ADABEYA Port

Located at the northern end of the Gulf of Suez, 17 km away from Suez City



**1.67** km<sup>2</sup>

Total Area

**650** m

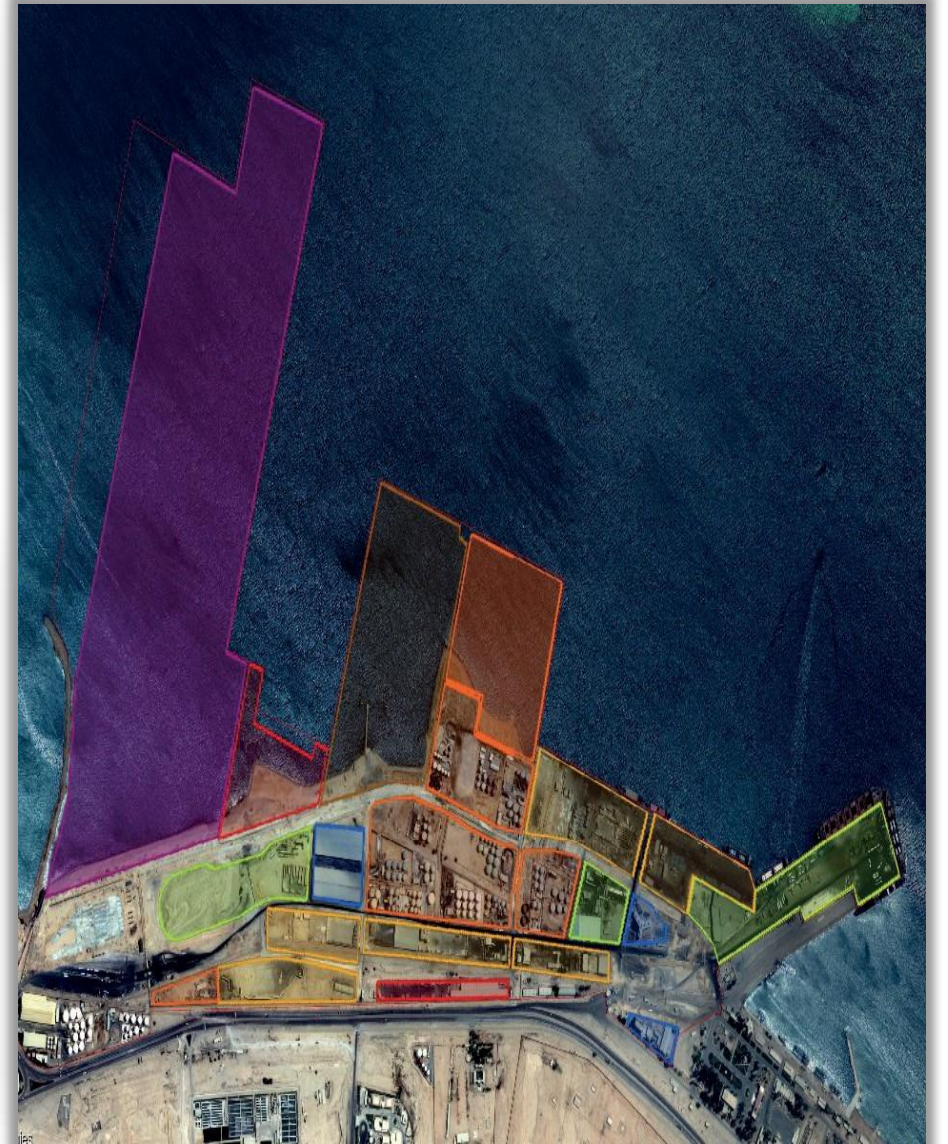
Turning Circle

**1.4** km

Quay Length

**9-14** m

Port Depth



# EAST PORTSAID Port



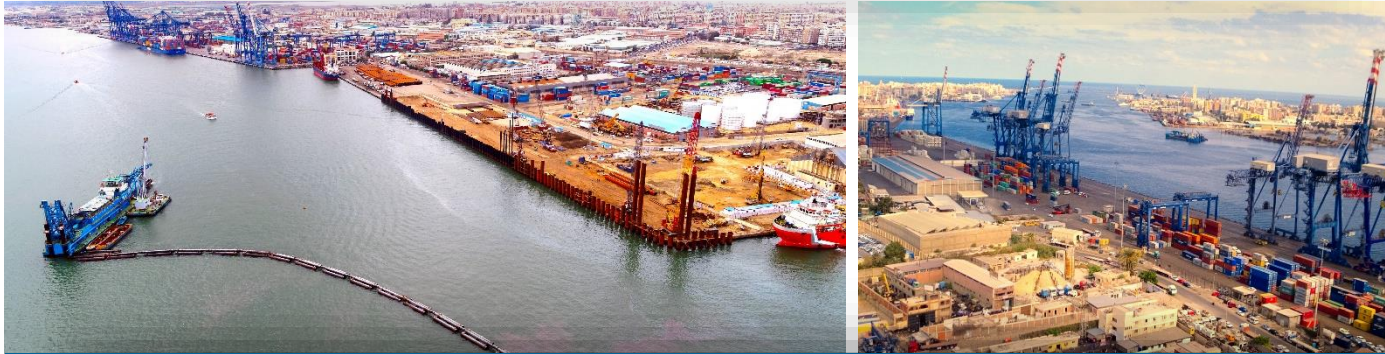
Located alongside the Suez Canal, with sheltered deep water facilities capable of accommodating very large vessels



<b>9.5</b> km <sup>2</sup>	<b>5</b> km	<b>18</b> m	<b>27</b> km <sup>2</sup>
—	—	—	—
<b>Total Area</b>	<b>New Quay</b>	<b>Port Depth</b>	<b>Logistics Area</b>

## WEST PORTSAID Port

The Port is situated at the Northern entrance of the Suez Canal at the crossroad of the main world sea trade route between the East and West via the Suez Canal



1 km<sup>2</sup>

Total Area

3.2 km

Total Quay Length

670 m

New Quay Length

8-15 m

Port Length

# AL-ARISH Port



The only port in North Sinai, suitable for handling Dry bulk activities up to 6,000 tons.



**1.55** km<sup>2</sup>

Total Area

**1.5** km

Total Quay Length

**915** m

New Quay Length

**7-15** m

Port Depth



## AL-TOR Port

Currently used as a small marine services berth to serve the petroleum services activities for the Gulf of Suez region.



**0.5** km<sup>2</sup>

Total Area

**75** m

Quay Length

**5** m

Port Depth

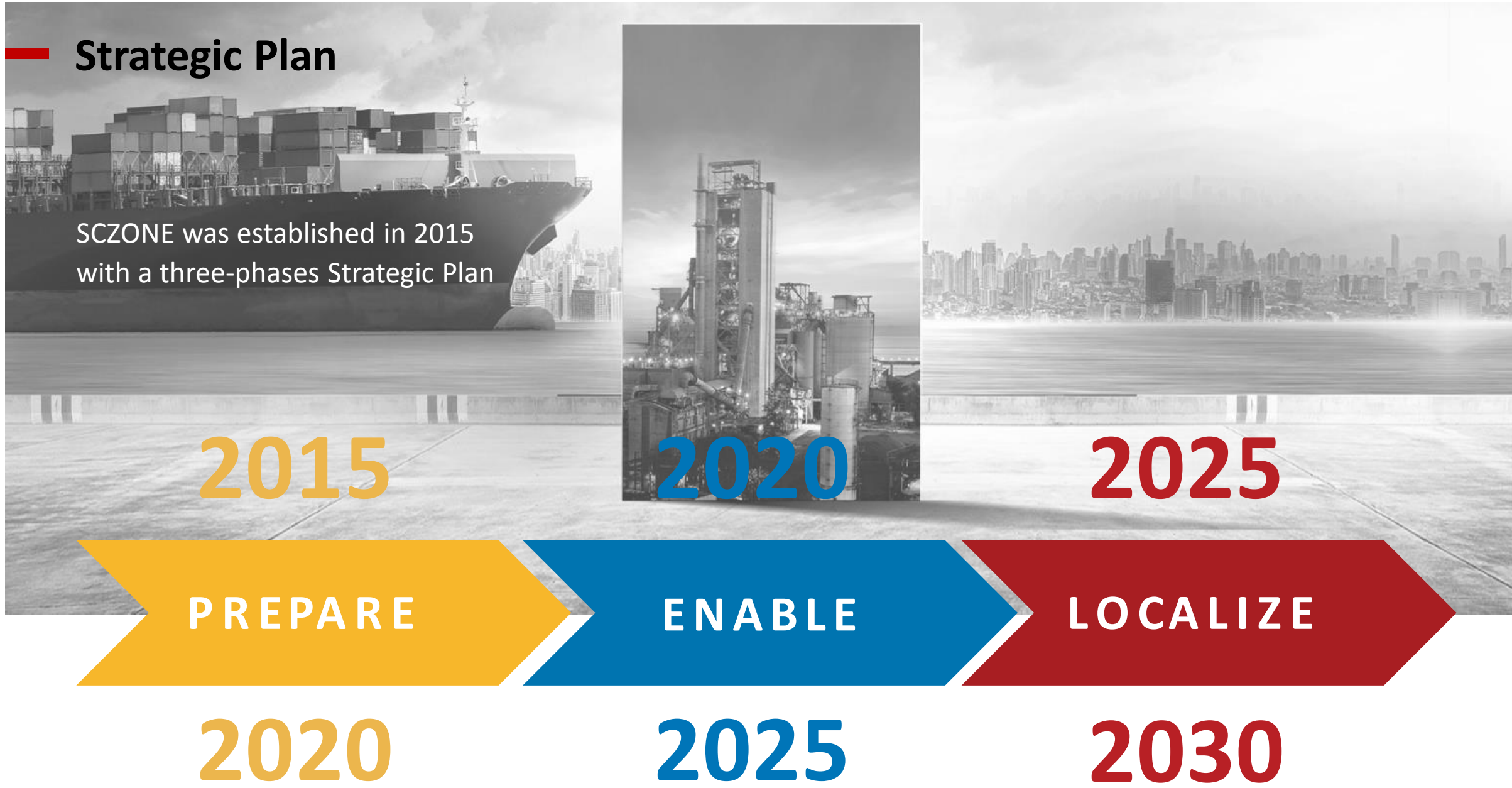


04

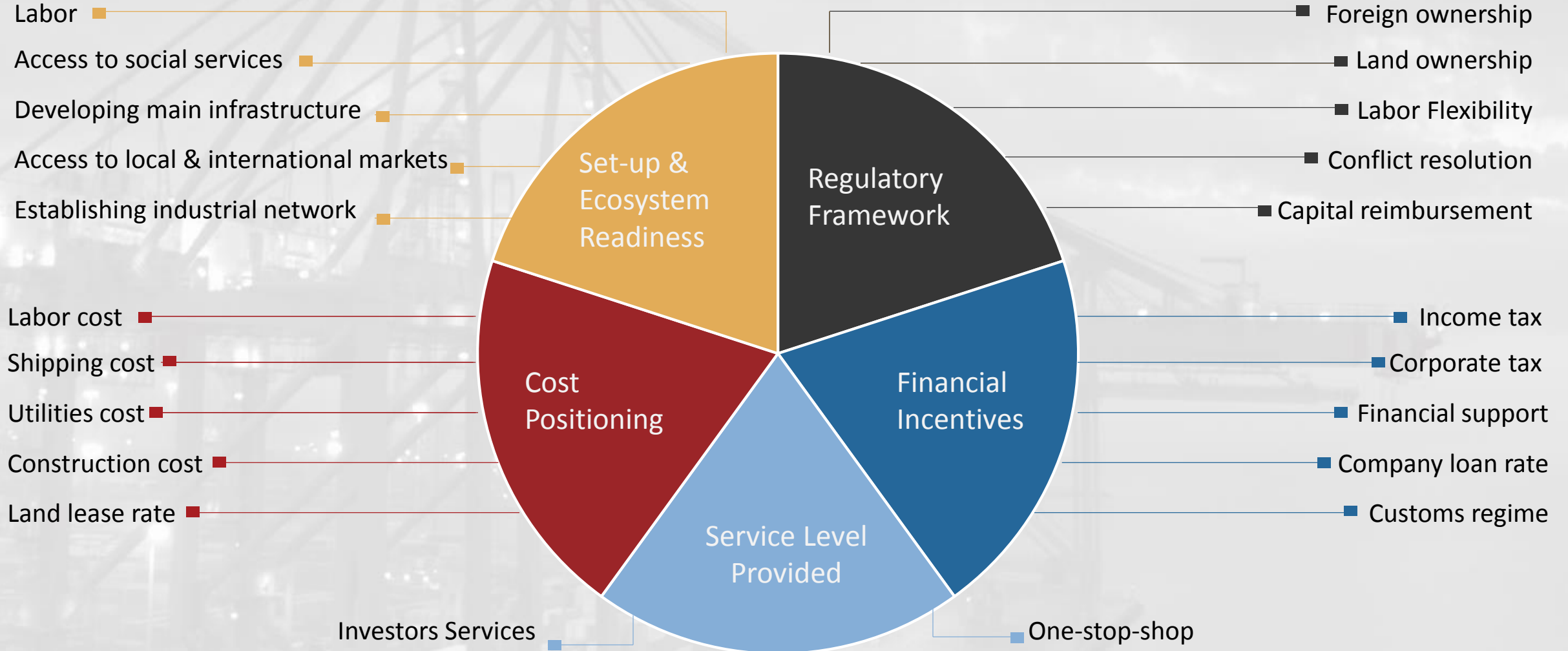
—  
2020 - 2025

# SCZONE Strategy

INTER EGYPT



# Strategic Pillars



05



WATER, POWER & ROADS

# Utilities & Infrastructure



# Utilities and Infrastructure

# \$2.8Bn



## NATURAL GAS

**1** PRESSURE REDUCTION UNIT & PIPELINE NETWORK



## COMMUNICATION

**3** COMM. CENTRAL & FIBER OPTICS CABLES



## POWER SUPPLY

**7** POWER SUB-STATION

**13** POWER DISTRIBUTOR



## SEWAGE TREATMENT

**2** TREATMENT PLANT & PIPELINES

**6** SEWAGE TREAT. COMPACT UNITS



## WATER SUPPLY

**2** SEA WATER DESALINATION PLANT

**3** WATER LIFT PLANT & STORAGE

# Utilities and Infrastructure



# 06 — REGULATIONS

# Incentives



# Incentives



## 0% CUSTOM TAX

- 0% Customs on all project's components imported from abroad under the condition of exporting the final products
- In the case of exporting to the local market: custom tax will be applied on the imported components only



## 0% VALUE ADD TAX

- 0% VAT applied whether importing from local or foreign markets to SCZONE, on all procurements required for manufacturing, production, operation (raw materials, components, spare parts, etc.)
- 14% VAT is applied on exporting products from SCZONE to the local market



## 50% CORPORATE TAX REFUND (Valid for 7 Years)

- Discount on Corporate Tax (net profit) equivalent to 50% of project investment costs
- Discount shall be attributed maximum to 80% from the paid-up capital

## Incentives



### 100% FOREIGN OWNERSHIP ALLOWED

- Foreign companies or foreign branches are allowed to import production inputs or final products from the mother company.



### 5-YEAR RESIDENCY PERMIT TO FOREIGN INVESTORS

- Foreign investors have the right to obtain residency for a period of 5 continuous years, renewable for similar periods throughout the duration of the project



### LABOR-INTENSIVE PROJECTS USING LOCAL COMPONENT

- Reduced prices or facilitate the payment of the value of the energy
- Full/Partial reimbursement of utilities cost done by investors on the project's land
- Partially/fully pay the insurance share of Egyptian employees & the employers for specified period



# Incentives



## EXPORT & IMPORT REGULATION

- Special rules governing the import and export from the SCZONE
- Reducing cost & time of regulatory examination of shipments
- Treating the end product of SCZONE industrial establishments as local products



## NEW CUSTOMS GUIDE & MANUAL

- Creating an integrated industrial community
- Establishing a logistic platform to serving international trade and SCZONE
- Reducing time of release of shipments



## EXPORT SUPPORT PROGRAM

- Industrial manufacturers for export purposes at SCZONE will benefit from the program
- Enhancing the competitiveness at foreign markets

## Incentives

ONE

STOP

SHOP

SCZONE's One-Stop-Shop is a unique business model, creating an ideal business environment through:

- Facilitation of all services required for projects startup effectively & efficiently
- Simplification of procedures and documents
- Elimination of bureaucracy through more streamlined procedures
- Minimization of administrative and financial burdens
- Digitalization of E-Services will be "LIVE" during the 2<sup>nd</sup> half of 2023



## Strategy & Objectives

2020

ENABLE

2025

Dynamically contribute to Egypt's growth rate, while fostering SCZONE's position as an international Investment hub and an export platform with a distinctive access to Africa.



Capitalize on SCZONE's role as a global logistics hub a mid international supply chains



Introduce an effective mechanism for maritime services and bunkering facilities



Localize targeted industries to substitute imports



Target investments and attract international shipping lines to the ports



Adopt industrial clusters policy for Ports and Industrial Zones



Develop platforms for small and medium enterprises



Apply a world-class infrastructure



Establish financial, commercial and services centers

# 07 — Targeted Sectors & Industrial Clusters

INTER EGYPT

# Targeted Sectors & Industries



Logistics



Vocational & Maintenance Centers



Data Centers



Bunkering Conventional/Green

4 SERVICES

INDUSTRIES 17



Green Fuel



Electrolyzers



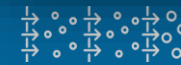
Wind Turbines



Solar PV



Petrochemicals



Water Desal. Membranes



Automotive



Rolling Stock



Electric Batteries



Car Tires



Casting & Foundry



Building Materials



Pharmaceutical



Active Pharma Ingredients



Medical Equipment



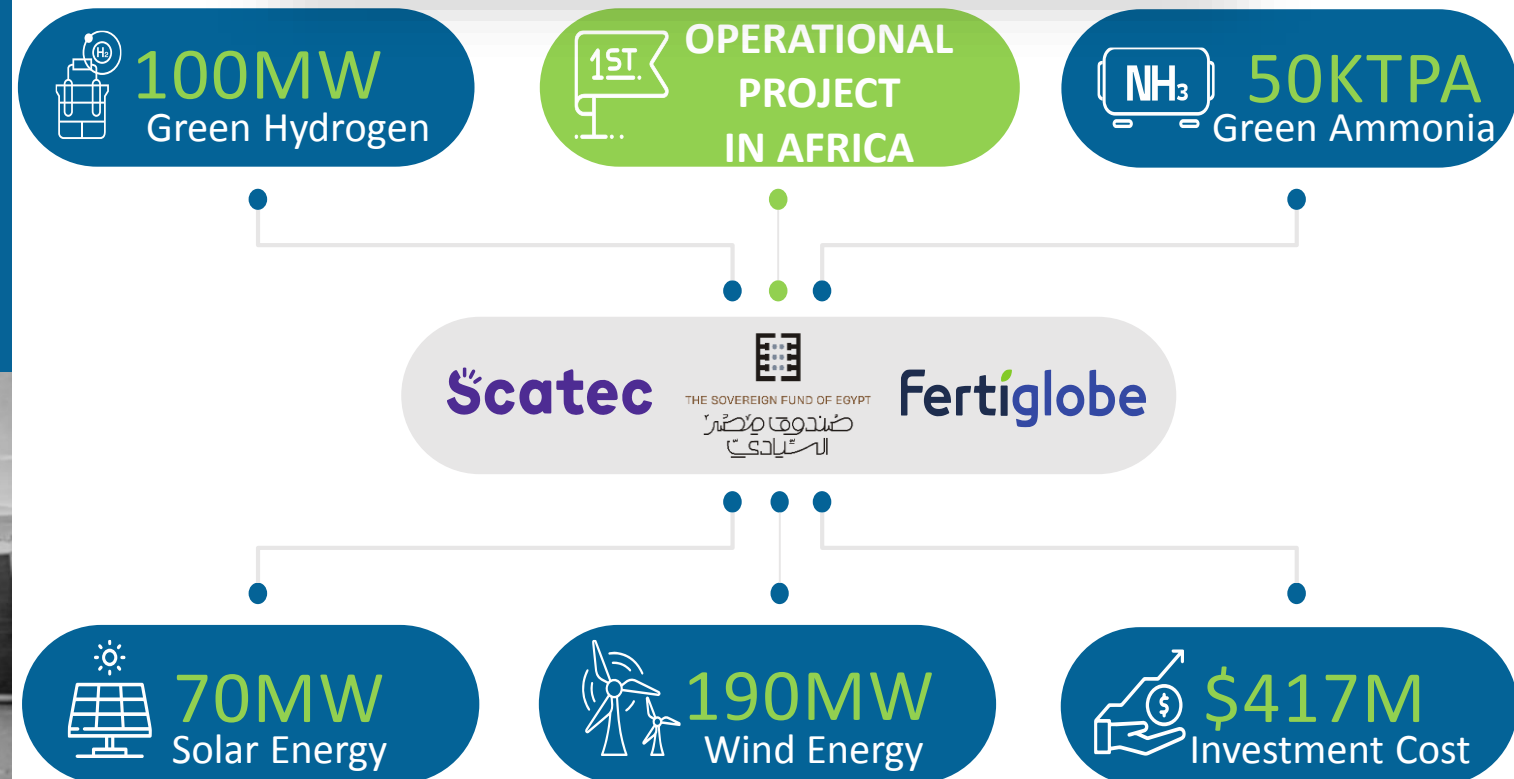
Textiles



Agribusiness

## H<sub>2</sub> Production at SCZONE

H.E. President Abdel Fattah El-Sisi  
President of the Arab Republic of Egypt  
and H.E. Jonas Gahr Støre the Norwegian  
Prime Minister, inaugurated the first  
integrated green hydrogen plant in Africa  
during the Leaders Summit at COP27,  
located at SCZONE's Sokhna Industrial  
Area.





# Green Fuel Industrial Cluster

In response to the rising global demand, and capitalizing on SCZONE's strategic location, we work on localizing the GREEN FUEL INDUSTRY at our Industrial Areas & Ports.

Hence, the SCZONE signed:

## 23 MOUs

- ACME
- Actis
- ACWA Power
- Alcazar
- Benchmark
- British Petroleum
- DAI-Infrastruktur
- Energy China
- K&K
- Maersk
- MEP
- Ocior Energy
- TAQA Arabia
- H2 Industries

9

FRAMEWORK AGREEMENTS (SIGNED)

15M

TONS/YEAR

Estimated Production

85Bn

USD

Estimated Investment

32M

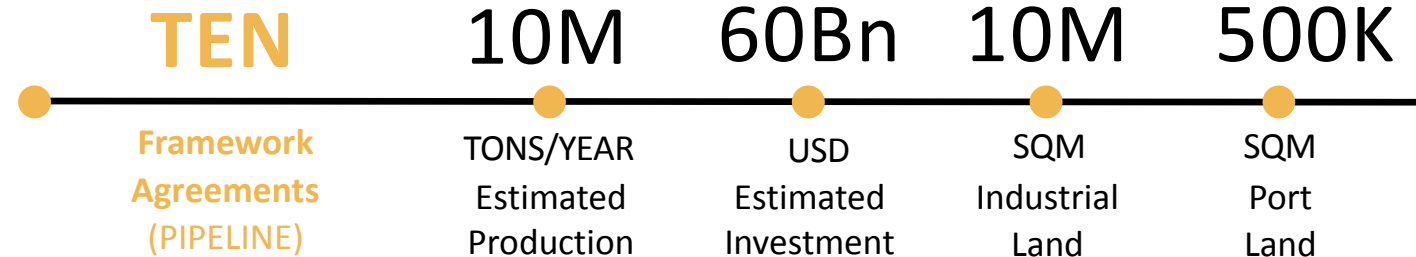
SQM

Industrial Land

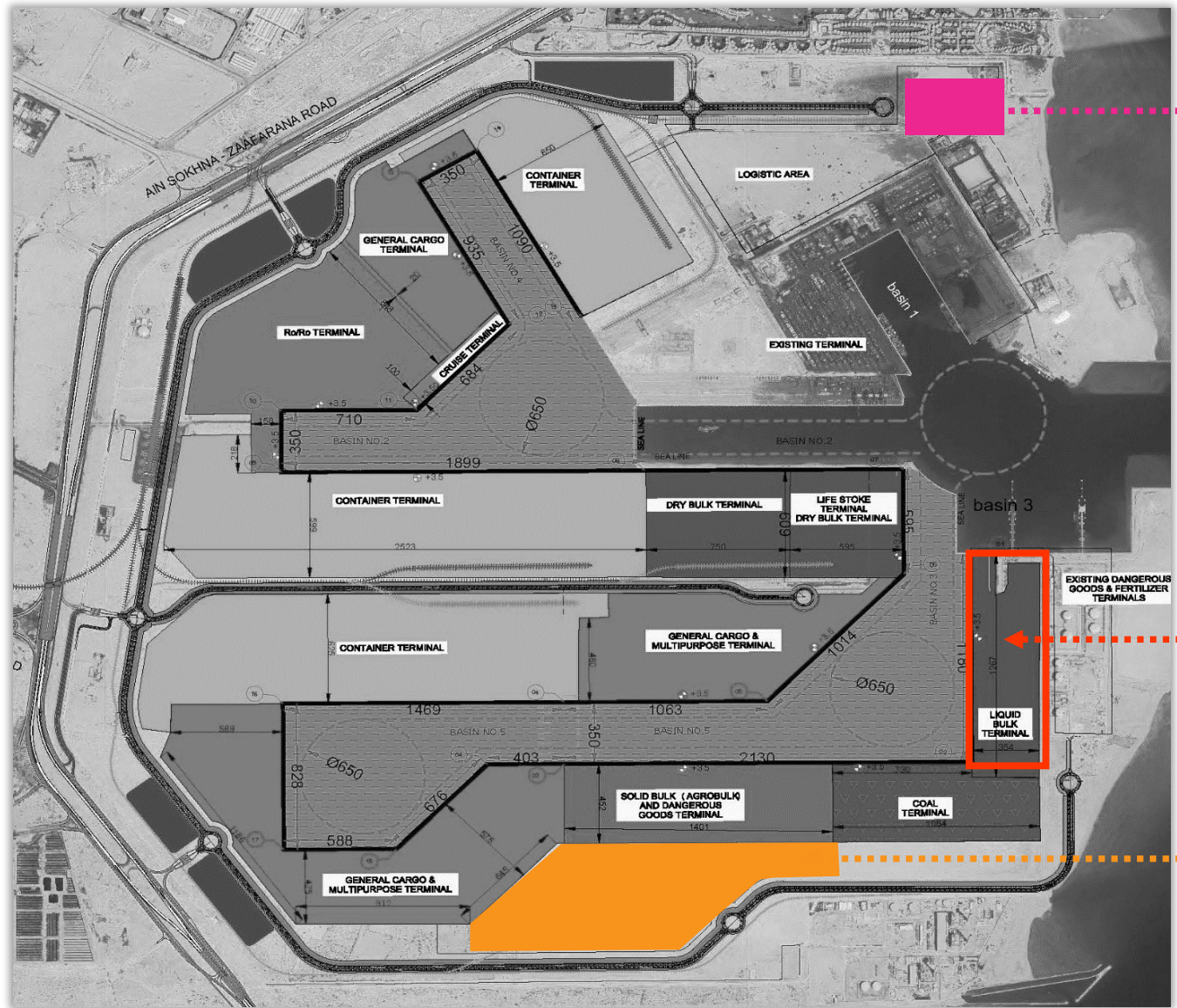
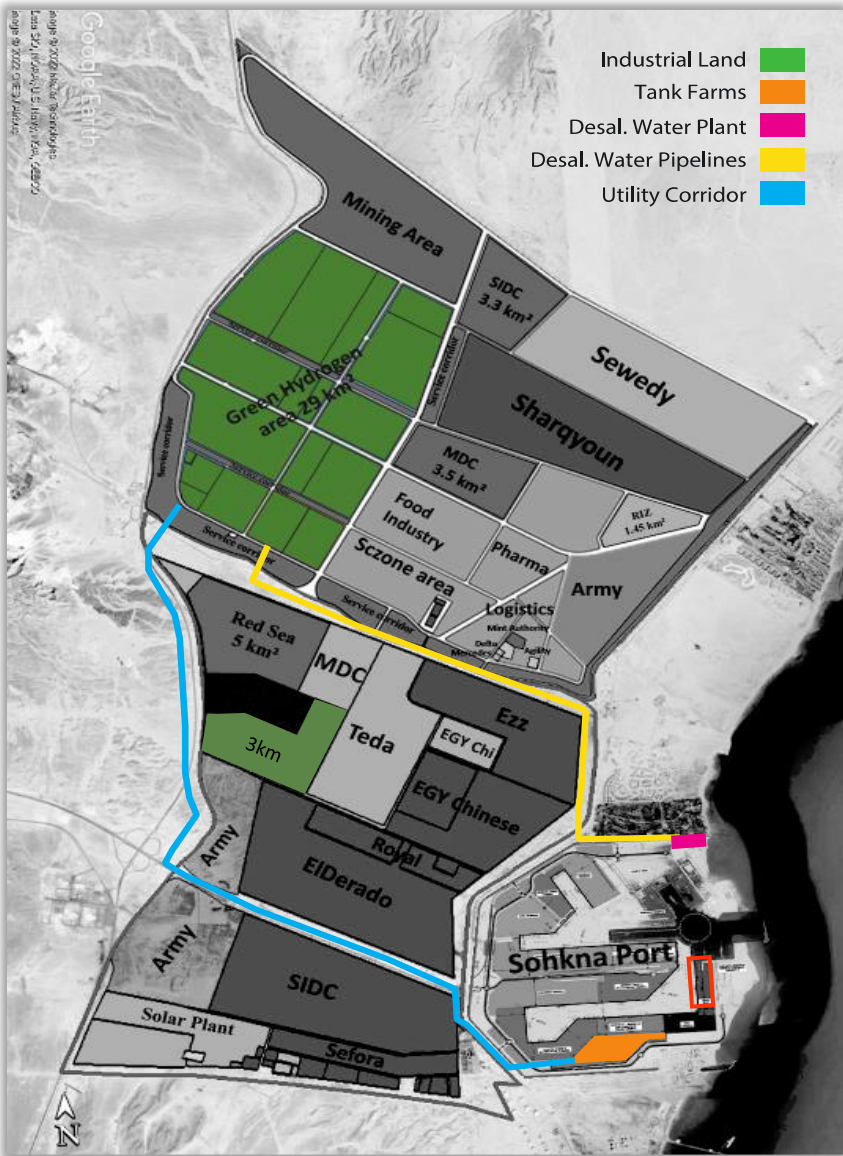
700K

SQM

Port Land



# Green Fuel Cluster at Sokhna

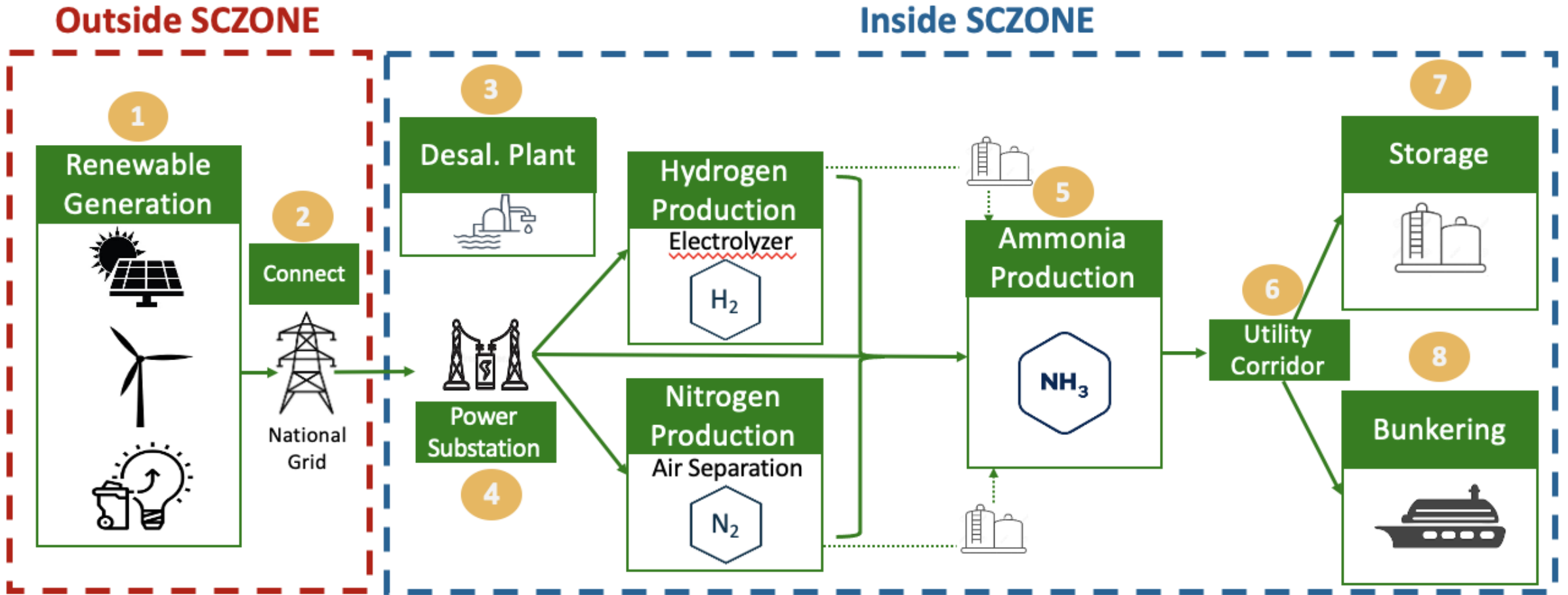


DESAL.  
WATER  
PLANT

LIQUID  
BULK  
TERMINAL

TANK  
FARMS

# Operational Model of Green Fuel Projects at SCZONE



# Investment opportunities in Green Fuel Industry at SCZONE

- Green Hydrogen Production
- E-Methanol Production
- Green Ammonia Production

## Main Stream

## Infrastructure

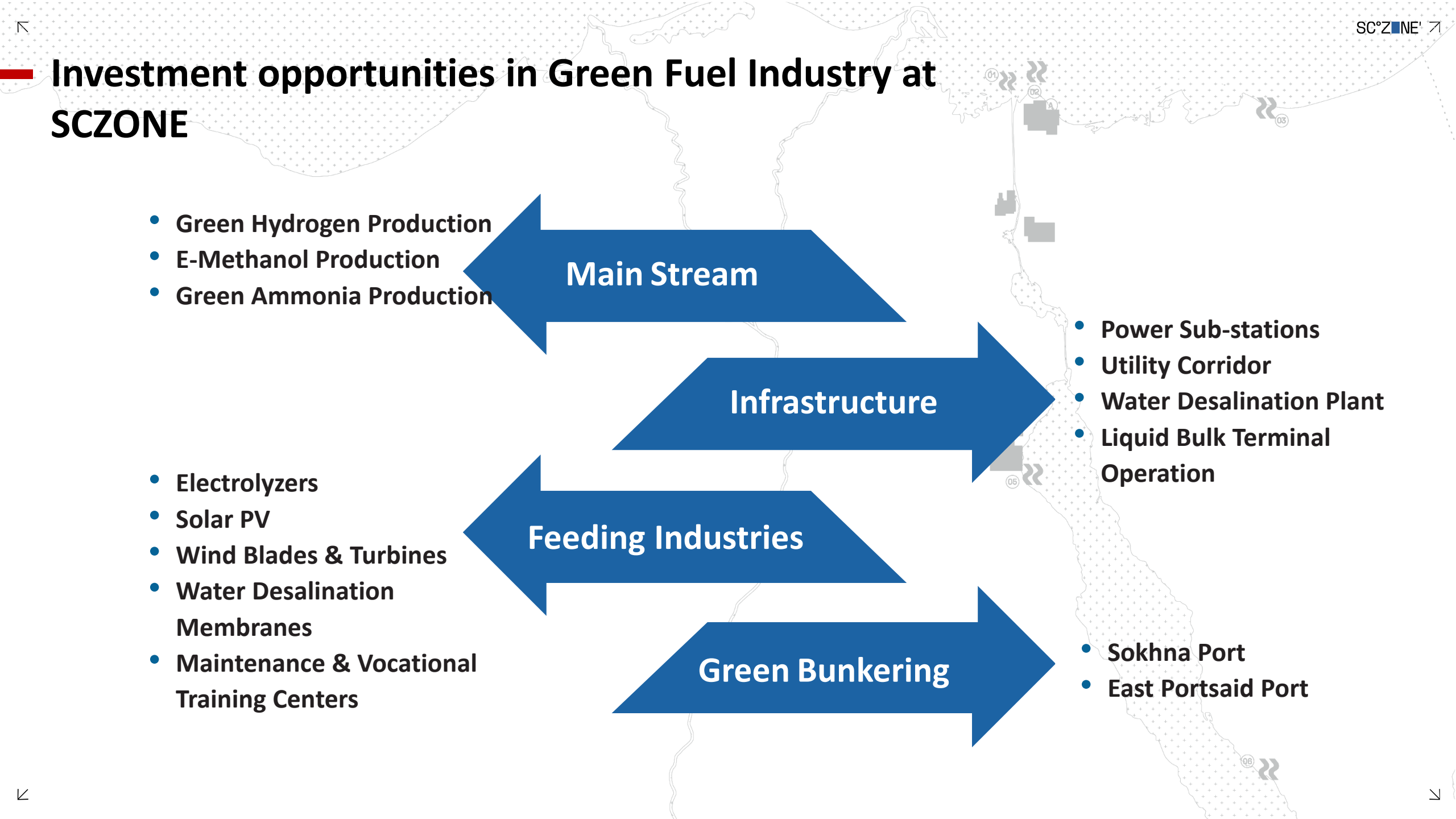
- Power Sub-stations
- Utility Corridor
- Water Desalination Plant
- Liquid Bulk Terminal Operation

- Electrolyzers
- Solar PV
- Wind Blades & Turbines
- Water Desalination Membranes
- Maintenance & Vocational Training Centers

## Feeding Industries

## Green Bunkering

- Sokhna Port
- East Portsaid Port





## Automotive Industrial Cluster

Capitalizing on the successful model of the rolling stock cluster, the SCZONE plans to host an automotive manufacturing cluster at East Portsaid Industrial Area, with a shared operational model for the Stamping Shop, the Plastic Parts Paint Shop, and the Paint Shop

**1.2** km<sup>2</sup>

PHASE 1

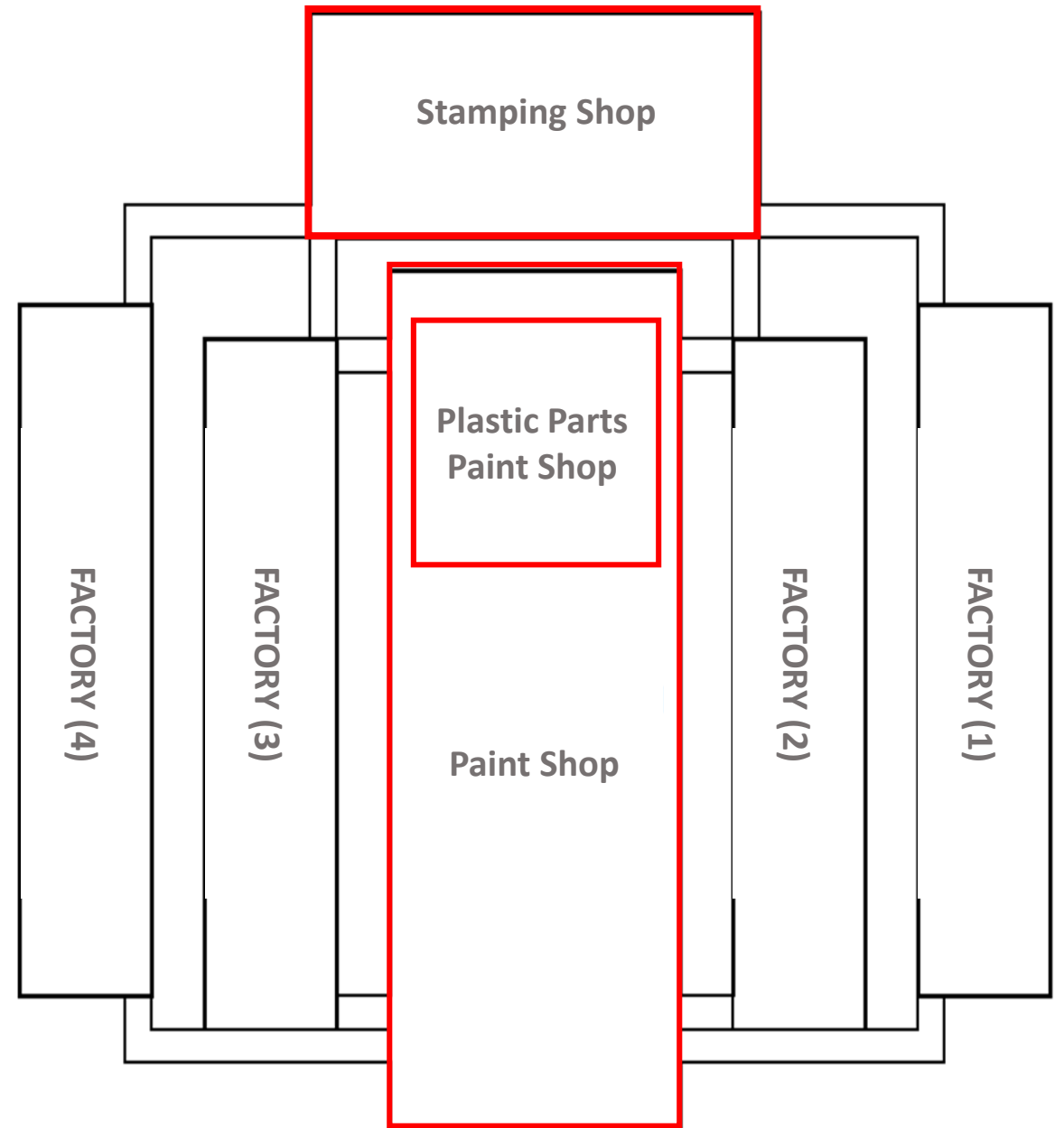
**Industrial Land**

**75,000**

UNITS

**Production Capacity**

The industrial cluster is expected to attract the feeding industries, and should serve the local and regional markets leveraging on the presence of a RORO terminal at East Portsaid Port



# SC°ZONE'

INTEGRATED ROUTE » ONE DESTINATION

THANK YOU

CAI 30°02'32"N 31°13'57"E

SUZ 29°42'49"N 32°18'17"E

PSD 31°15'33"N 32°18'10"E

المنطقة الاقتصادية  
لقناة السويس  
SUEZ CANAL ECONOMIC ZONE