



# SpaceSUR

## Smart Space Solutions

[contact.eu@spacesur.com](mailto:contact.eu@spacesur.com)

[www.spacesur.com](http://www.spacesur.com)

# Who we are



We are a company specialized in software engineering and solutions applied to the entire aerospace cycle, from the development of satellites and complex systems, to the implementation of geospatial solutions with high added value for different industries.

**Our mission is to generate a positive impact on business and society based on the application of space technology for digital transformation.**



**SpaceSUR EU**  
Barcelona, Spain

**SpaceSUR**  
Buenos Aires,  
Argentina

10+

years in the market

25+

engineers and scientists

100+

successful projects

20%

research & development



Management System  
ISO 9001:2015

www.tuv.com  
ID 9108626361

- Quality management independent and specialized department within our Company.
- ISO 9001:2015 for “Aerospace systems and software engineering. Geospatial software solutions”. Alignment with ISO 25010 y 90003:2014 (Software development).
- ECSS standards for aerospace developments. DO-178 implementation process.
- PMI professional certifications for Project Management.

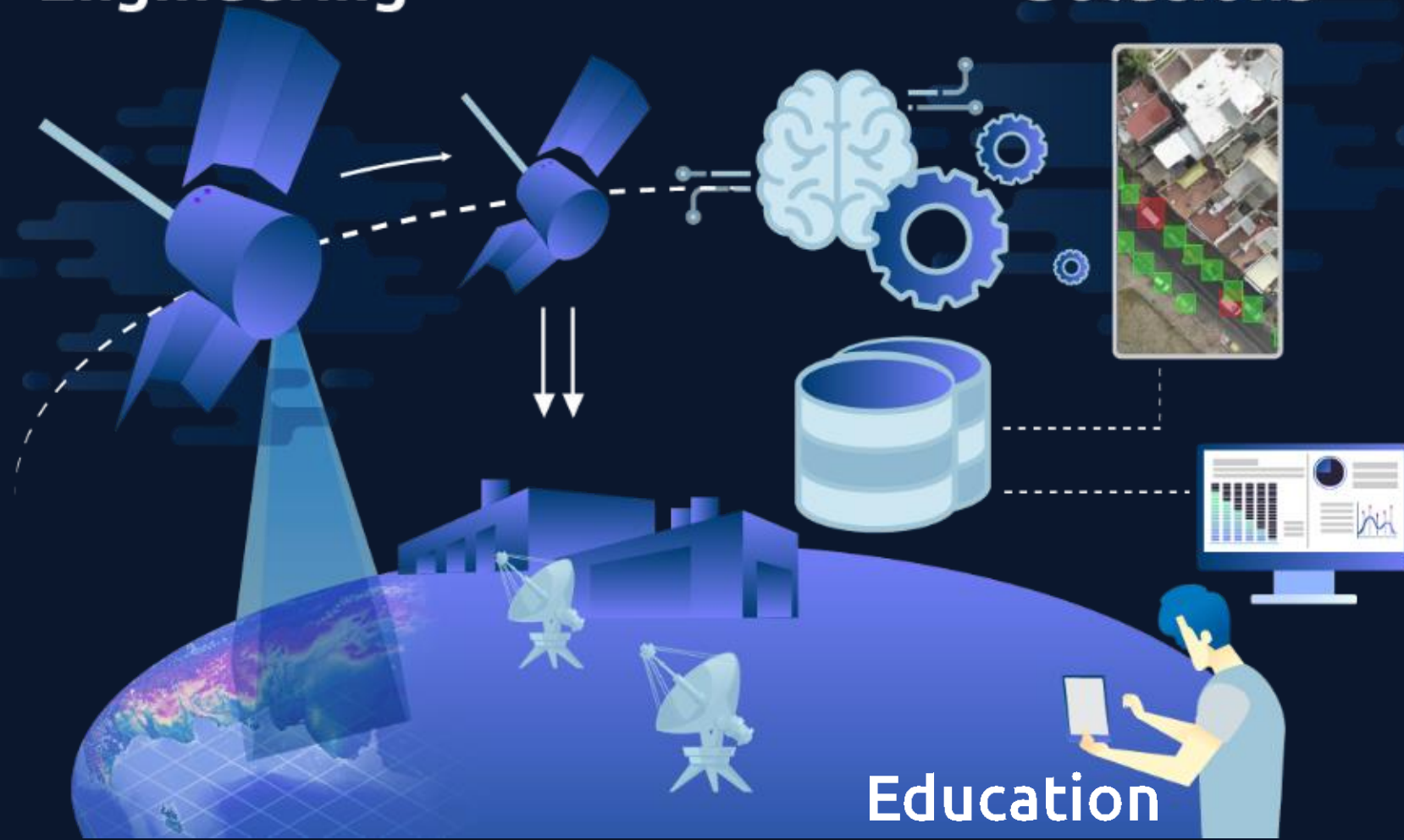


# Business Units



## Aerospace Engineering

## Industry Solutions



## Education

A large, stylized circular graphic composed of multiple concentric lines, some solid and some dashed, in a light blue color, framing the central text.

# Geospatial and Earth Observation Solutions

## WAVES OF DIGITAL DISRUPTION

1980/90's  
MAINFRAME & PC

INTERNAL  
PROCESSES



2000's  
WEB & MOBILE

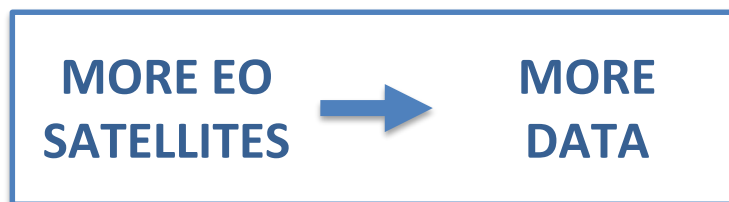
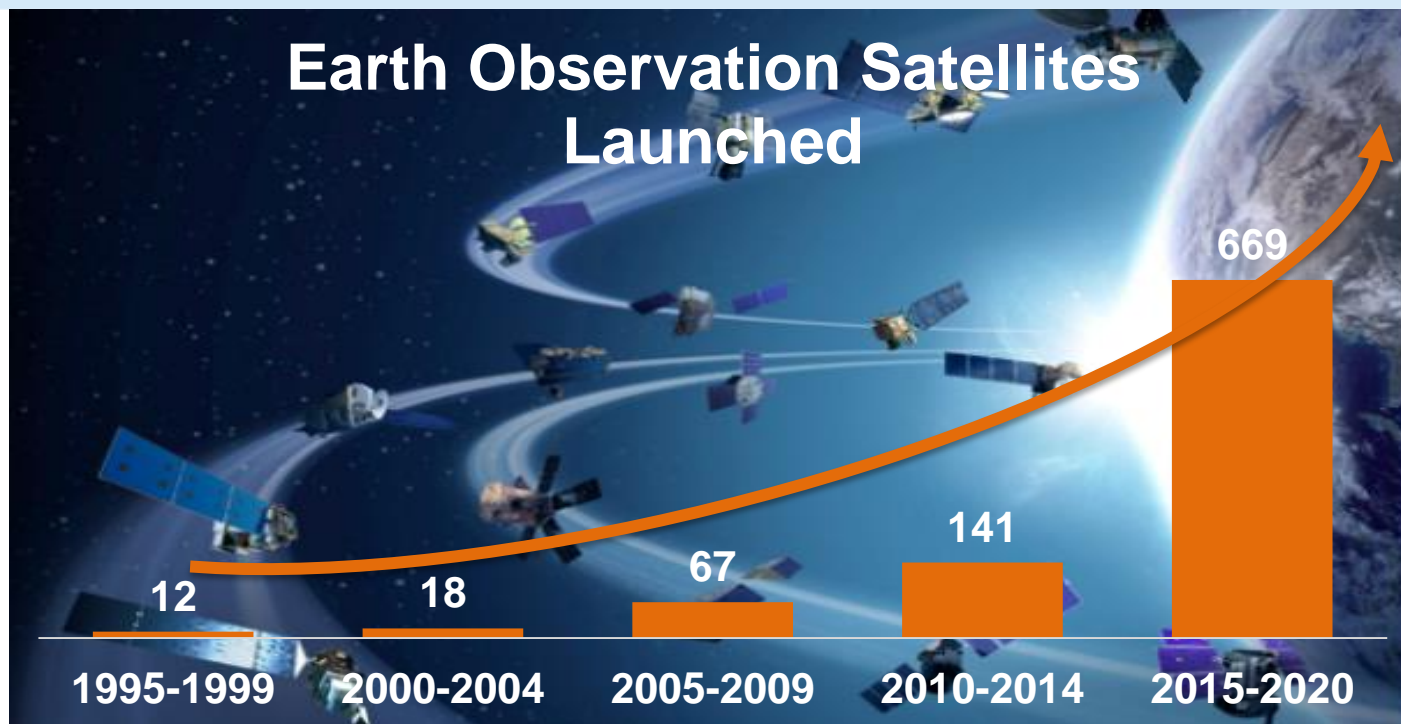
SOCIAL AND  
SALES RELATIONS



2020's  
IOT & BIG DATA

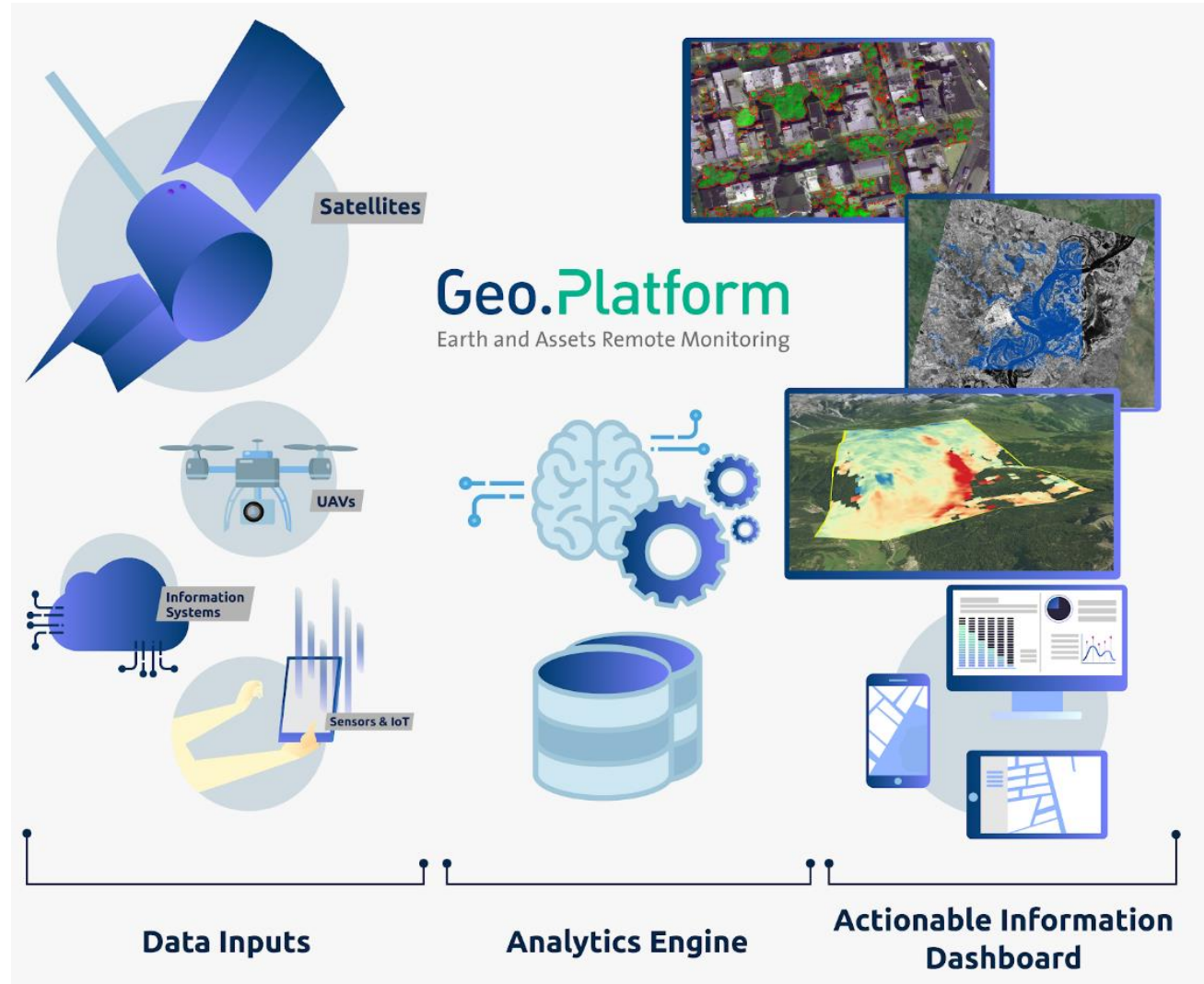
FULL DIGITAL  
TRANSFORMATION OF  
THE PHYSICAL WORLD  
AND ALL THINGS





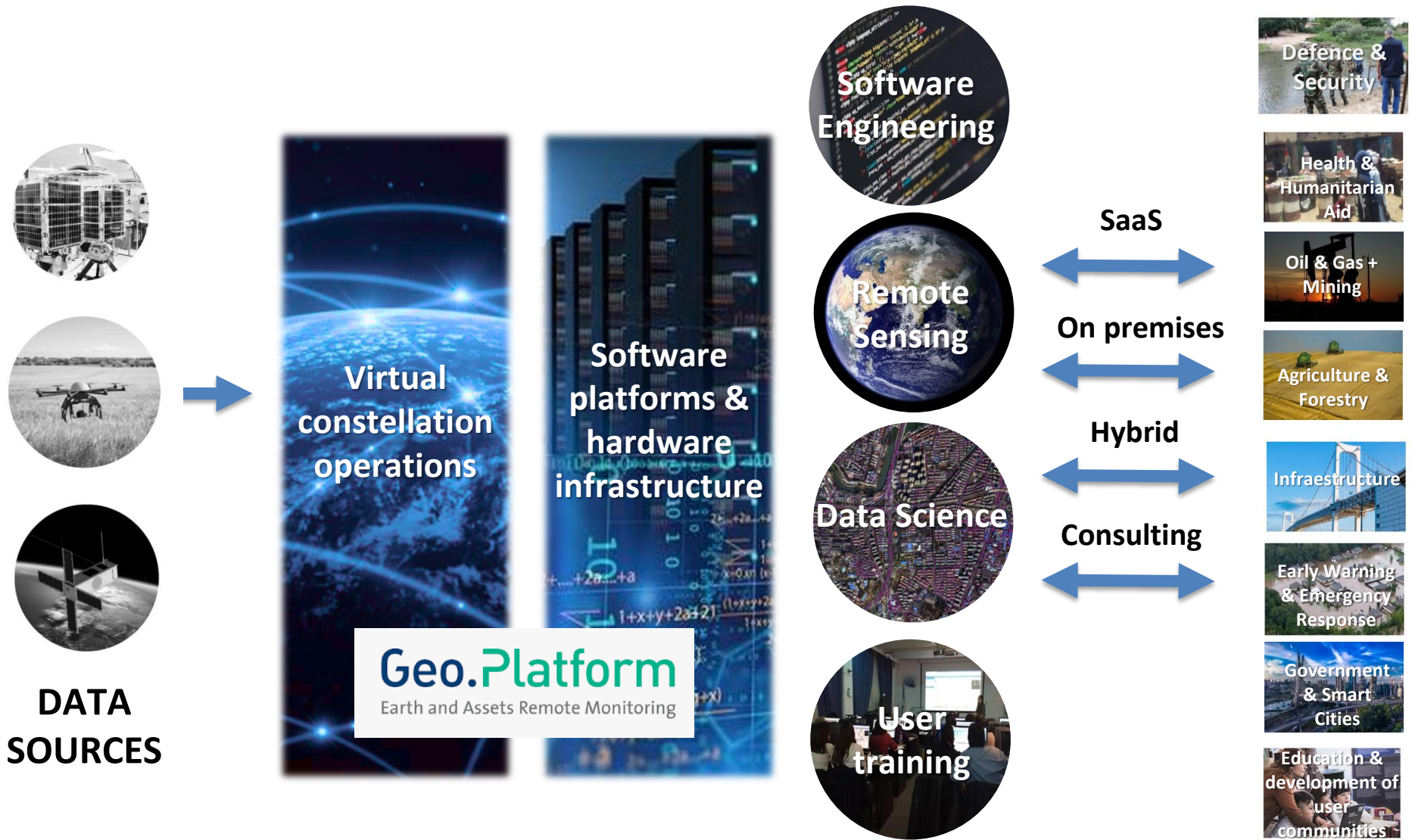
# A Data Platform Approach to Problem Solving

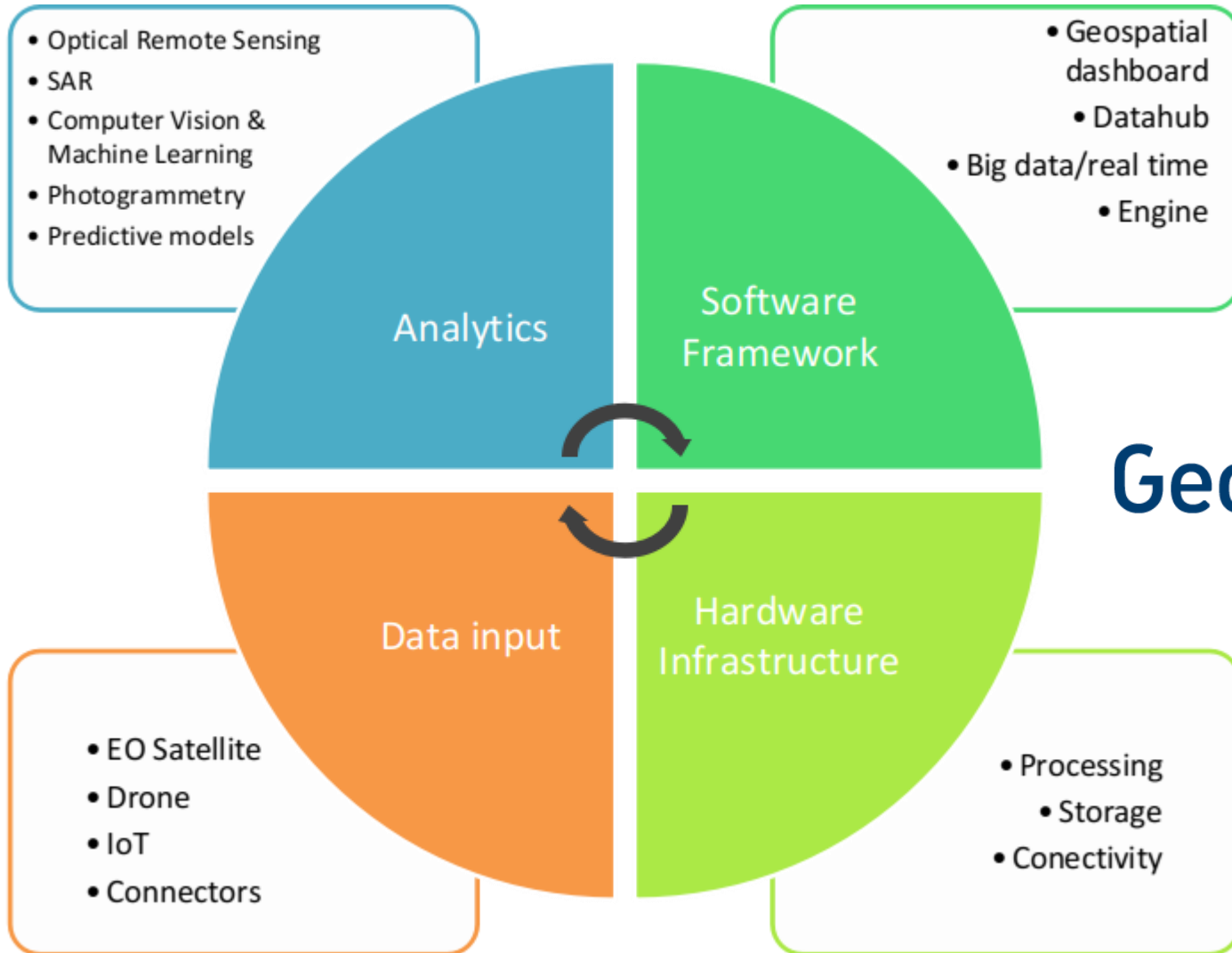
**Geo.Platform** is a cloud data analytics platform developed by SpaceSUR to provide solutions adapted to different industries.





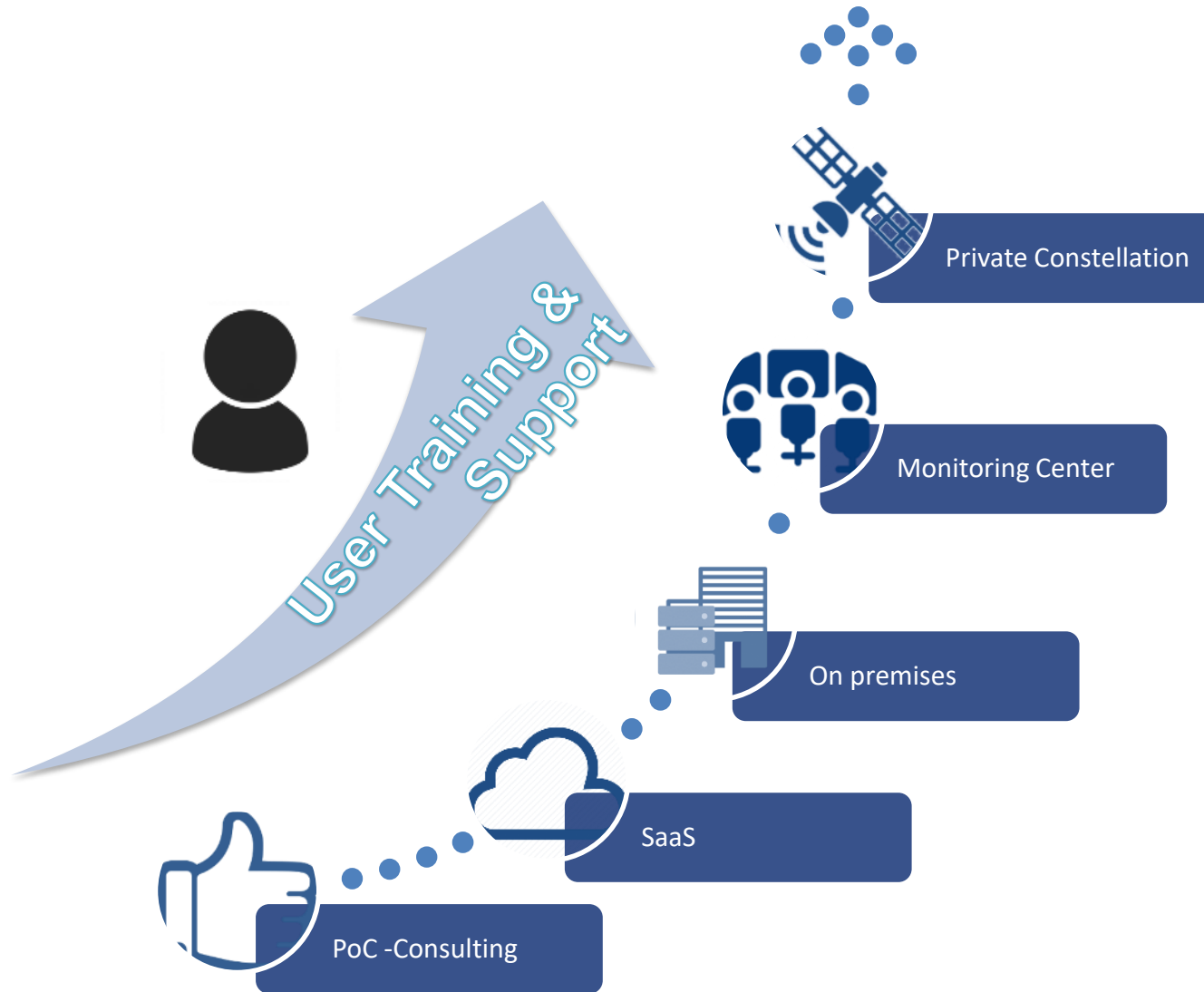
# Operating Model





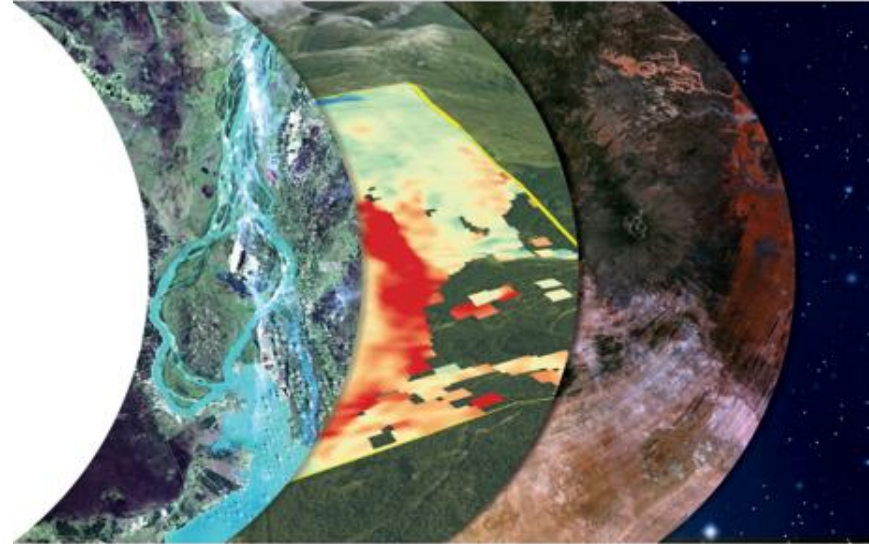
## Geo.Platform

# Adoption Stages



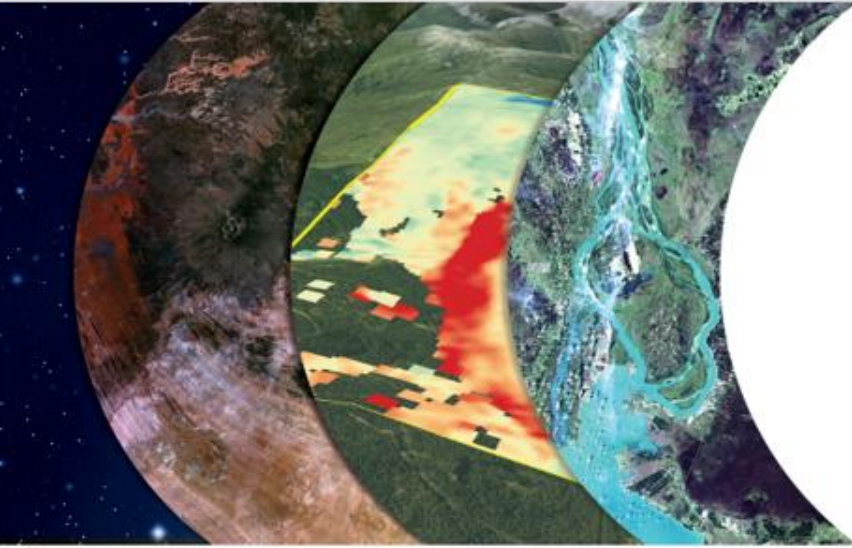
## Geospatial data collection and management

- Selection, acquisition and pre-processing of remote sensing imagery.
- Gathering of geospatial data through registry searching, sensor networks or field surveys.
- Cleaning and normalization of geodatabases.
- Support on configuration of geospatial tools, including data architecture and integration into clients systems.



## Geospatial data processing and analysis

- Algorithm research and definition of specialized or complex industry solutions.
- Processing of remote sensing data and imagery according to specific needs.
- Data analysis and interpretation through specialized GIS tools.



## Knowledge management, technical writing, and documentation

- Creation of materials, technical briefings, manuals, and other geospatial-related technical documentation on products or processes.
- Provision of documentation on analytic methodologies and approaches for reproducibility and reporting.

## Mapping and data delivery

- Generation of static and dynamic maps based on specific use cases and scenarios.
- Support in interpretation of end products for application to client operations.

## Transfer of Technology

- Development of training materials and workflows to assist the use of geospatial data, tools and technologies.
- Virtual and in-person trainings on the use of geospatial data, tools and technologies.
- Support in developing curricula and work programs for training clients staff on geospatial data, tools and technologies.



### Public construction, Urban Infrastructure and Change Management

- Control of Exclusion Zones
- Monitoring of deformations in infrastructure
- Historical heritage management and critical structures
- Change Control for Cadastre and Urban Planning



### Urban Trees and Green Spaces

- Forest monitoring
- Vegetative vigor monitoring
- Monitoring of green areas
- Urban tree management



### Environment and Waste landfills

- Greenhouse gas analysis
- Garbage dumps and landfill monitoring
- Air quality monitoring



### Disaster Risk Reduction

- Analysis of risk areas for disasters, floods / fire / earthquakes / landslides
- Digital risk maps
- Rapid response to emergencies and disasters
- Resilient city model
- Urban planification



# Success cases



## NATIONAL COMPREHENSIVE RISK MANAGEMENT SYSTEM

Ministerio de Seguridad Presidencia de la Nación

Risk Reduction and Emergency Response Center

Anthropic Floods Wildfires Landslides Volcanic Seismic

Mobile Center

Local Governments NGOs Private sector Scientific Network

Geographic Situational Awareness

Geospatial Big Data

POWERED BY

**Geo.Platform**

SINAGIR

HEXAGON LUCIAD

Risk maps

Image Analytics

Synthetic Aperture Radar

Machine Learning

Earth Observation Satellites

ALERT CITIZENS

ALERT ALERT

WWW.SPACESUR.COM

## SPACESUR in the SAOCOM

The Saocom is a constellation of earth observation satellites with the most advanced L-band fullpolarimetric sar (synthetic aperture radar).

ISVV AND ECSS ADAPT FOR CRITICAL EMBEDDED SOFTWARE

MISSION MONITORING SYSTEM

ECSS TAILORING FOR THE GROUND SEGMENT

PAYLOAD DATA PROCESSORS

SAR CALVAL FACILITIES

GEOSPATIAL SYSTEM FOR IN-SITU DATA

SOIL MOISTURE DATA PRODUCTS

AGRICULTURE APPLICATIONS

HYDROLOGICAL EARLY WARNING APPLICATION

USER CARE AND DATA DISSEMINATION

more than **150,000** hours OF SOFTWARE ENGINEERING AND EARTH OBSERVATION SCIENCE UNDER AEROSPACE STANDARD ECSS

## EARTH OBSERVATION FOR DEMOGRAPHICS AND PUBLIC HEALTH

unicef SPACE SUR

**SOLUTION**

An Earth observation based methodology for the estimation of demographic variables, derived from satellite imagery and micro census surveys, in complex areas with outdated, incomplete or non-reliable population & housing data.

**TARGET**

To assess the spatial distribution of the target population (elderly, newborn, pregnant women) for vaccination campaigns in several health districts.

PILOT AREAS

**AFRICA**

CHAD MOZAMBIQUE

OBSERVED ENVIRONMENTAL VARIABLES

Vegetation and water Lake Erythraean Vegetation life system

CALCULATION OF SOCIO-ECONOMIC PARAMETERS

Urbanization density Urbanization density Urbanization density

Settlements and population density

Geo.Platform

WWW.SPACESUR.COM

## Massive user training in space technology application

SPACE SUR 2MIP CONAE

EDUCATION CONTENTS BASED ON DIFFERENT TEMATICS AND INDUSTRIES

APPLICATION OF MULTIPLE EARTH OBSERVATION SATELLITES

SOFTWARE FOR DIFFERENT USER TYPES

COURSES, WORKSHOPS AND TRAINING PROGRAMS

1,300,000 STUDENTS

3,500 SCHOOLS

12,000 TEACHERS

10,000 PROFESSIONALS